



Psychological Clinical Science
UNIVERSITY OF TORONTO
SCARBOROUGH

2022 Year-In-Review

Graduate Department of Psychological Clinical Science



In this Issue

Page 2	Chair's Message
Page 3	Clinical Psychology Faculty
Page 4-6	Faculty Highlights
Page 7	Clinical Psychology Students - Masters
Page 8-9	Clinical Psychology Students - Doctoral
Page 10	Class of 2022
Page 11-13	Student Highlights - Presentations
Page 14-15	Student Highlights - Awards, Grants & Recognitions
Page 16	2022 Funding Awarded - Core Faculty
Page 17- 19	Publications

Chair's Message...

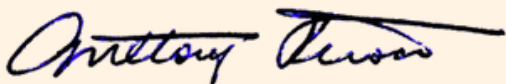
Dear students and faculty,

As another year passes, I reflect on my gratitude for the students, staff, and faculty that continue to enhance the excellence of our department through their ingenuity, collaboration, and perseverance. In the face of persistent challenges posed by the COVID-19 pandemic, our department has collectively committed to offering a rigorous training experience to our students, including in our courses, research activities, and clinical placements. I am pleased to say that we realized these promises in the last year by virtue of a shared sense of responsibility to deliver an excellent training program, and ultimately, to improve the mental health of the individuals in our community.

The success of our program is intrinsically linked to the successes of our students. I am delighted to see our program's alumni excelling across an impressive diversity of employment settings—provincial ministry, university health centre, hospital treatment program, private practice, and academic psychology department, among others. Students currently enrolled in our program hold prestigious scholarships, honours, and awards, which reflect their exceedingly high academic achievement, research excellence, and service to the campus and broader community (I encourage you to read more about these accomplishments here in our Year-In-Review). Our outstanding departmental staff continue to come through with exceptional support as we make curricular changes, process admissions applications, and deliver department events and activities. The faculty in our program continue to achieve important career accomplishments as researchers and academics, raising the international profile of our training program.

With the passing of another year, our department reaffirms its commitment to provide a training program that adapts to the changing priorities in our field and the varied interests of our students, all while delivering the mental health services that our communities deserve. I look forward to the many exciting opportunities and activities that the new year will bring to our department!

Warm regards,



Anthony C. Ruocco, Ph.D., C.Psych
Professor, Graduate Chair and Director of Clinical Training

Clinical Psychology Faculty



Anthony C. Ruocco, Ph.D., C.Psych.
Professor, Graduate Chair & Director of Clinical Training



Amanda Uliaszek, Ph.D., C.Psych.
Associate Professor & Program Coordinator



Jessica Dere, Ph.D., C.Psych.
Associate Professor, Teaching Stream & Associate Chair, EDI



Zindel Segal, Ph.D., C.Psych.
Distinguished Professor of Psychology in Mood Disorders



Andrew Cooper, Ph.D.
Assistant Professor, Teaching Stream



Michael Best, Ph.D., C.Psych.
Assistant Professor



Konstantine Zakzanis, Ph.D., C.Psych.
Professor



R. Michael Bagby, Ph.D., ABAP., C.Psych.
Professor



Vina Goghari, Ph.D., C.Psych.
Professor & Vice-Dean, Research & Program Innovation, SGS

Associate Members

Alison Bury, Ph.D., C.Psych
Andy Lee, Ph.D.
Benjamin Goldstein, M.D., Ph.D.
Brett Ford, Ph.D.
Catherine Sabiston, Ph.D.
Cendri Hutcherson, Ph.D.
Cory Gerristen, Ph.D., C.Psych
Donna Ferguson, Psy.D., C.Psych, ABPP
Rutsuko Ito, Ph.D.
Gary Remington, M.D., Ph.D.
George Foussias, M.D., Ph.D.
Jennifer Rabin, Ph.D., C.Psych

Judith P. Anderson, Ph.D.
Kim Edelstein, Ph.D., C.Psych
Lance L. Hawley, Ph.D., C.Psych
Lena C. Quilty, Ph.D., C.Psych
Lesley A. Ruttan, Ph.D., C.Psych
Longena Ng, Ph.D., C.Psych
Mark Schmuckler, Ph.D.
Matthew Sloan, MD, MSc, FRCPC
Melanie Cohn, Ph.D., C.Psych
Michael Inzlicht, Ph.D.
Nathan Kolla, M.D., Ph.D.
Neil A. Rector, Ph.D., C.Psych
Niki Fitzgerald, Ph.D., C.Psych

Norman Farb, Ph.D.
Ofer Agid, M.D.
Marc Fournier, Ph.D.
Prathiba Shammi, Ph.D., C.Psych
Robin Green, Ph.D., C.Psych
Samantha Fuss, Ph.D., C.Psych
Sandra Black, O.C., O.Ont., M.D., FRCPC, FRSC
Sandra Yuen, Ph.D., C.Psych
Sean Kidd, Ph.D., C.Psych
Stephanie Penney, Ph.D., C.Psych
Suzanne Erb, Ph.D.
William Cunningham, Ph.D.

PROFESSOR ANDREW COOPER

In Fall 2021 through Winter 2022, Professor Cooper was part of the inaugural cohort of the "Exploring Best Practices in Teaching & Learning" professional development program offered by the Centre for Teaching and Learning. This summer, he was awarded the UTSC Assistant Professors & Lecturers Teaching Award and learned that he would be nominated for the 2023 tri-campus Early Career Teaching Award as well. And, after a successful continuing status review, Professor Cooper was promoted to Associate Professor, Teaching Stream in the Department of Psychology.

PROFESSOR JESSICA DERE

Professor Dere was awarded the coveted UTSC Associate and Full Professors Teaching Award, granted to those who demonstrate commitment to inclusive excellence in teaching and learning and supportive learning environments. Along with her colleagues in the Department of Biological Sciences, Professor Dere is co-leading a seminar series titled "What's in a diversity statement", supported by the Mentorship Initiatives Fund (MIF) at UTSC (\$6500). This seminar series and larger mentorship project explore the utility and evaluation of diversity statements in faculty hiring.

PROFESSOR ANTHONY C. RUOCCO

This year saw Professor Ruocco become the Graduate Chair and Director of Clinical Training for our department. He was elected Vice-President of the North American Society for the Study of Personality Disorders and was a keynote speaker at the Project Air conference in Australia. His CIHR-funded research on borderline personality disorder was featured in a University of Toronto [press release](#) earlier this year.

Faculty Highlights



Faculty Highlights

(cont.,)



PROFESSOR ZINDEL SEGAL

Professor Segal has continued to publish his research on mindfulness interventions such as his recent paper in the *Canadian Journal of Behavioural Science*, "Mindfulness Meditation in the Long-Term Management of Mood Disorders: Contributions by Canadian Researchers." Several other manuscripts of Professor Segal's have been published this year as well. He has also appeared on Rick Hanson's "Being Well" Podcast to discuss mindfulness and depression.

PROFESSOR VINA GOGHARI

The invited companion paper to Professor Goghari's 2021 CPA Award for Distinguished Contributions to Education and Training in Psychology, Reimagining Clinical Psychology (*Canadian Psychology*, 2022) was selected for an American Psychological Association's Article Spotlight: Reimagining clinical psychology as an inclusive science and a diverse and just community. Only a limited number of articles are chosen every year; in 2022 thus far it is 31 papers from about 5000 papers.

Canadian Psychology, the journal Professor Goghari is the Editor of, had two articles in the top 10 downloads out of 5000 published articles in American Psychological Association's 89 journals.

PROFESSOR MICHAEL BEST

The CIHR grant Professor Best received for his study on the efficacy of combined cognitive remediation and cognitive behavioural therapy for schizophrenia was funded this past year, and represents a Canada-wide multi-site clinical trial that will be one of the largest psychological intervention trials to ever be conducted for schizophrenia. It will be led by his team at UTSC. Professor Best also provided a year long training initiative this past year and trained over 100 clinicians in cognitive behavioural therapy for psychosis at hospitals across Ontario.

Professor Zakzanis was awarded a 5-year MITACS research award to examine Neuropsychological Predictors of Relapse in Substance Use Disorders. He also holds a 5-year SSHRC Operating Grant as a sole P.I in the amount of \$98,269 to examine the nature of the replication crisis in social science using neuropsychological test measures of effort. This year Professor Zakzanis was re-elected as the President of the Canadian Society for Medical Evaluators, a non-profit organization and is the first Psychologist (non-physician) to hold this title.

PROFESSOR R. MICHAEL BAGBY

In the past year Professor Bagby has continued with his new program of research on the influence of race and culture on the structure and interpretation of measures of personality and psychopathology with a particular focus on the effects of Black racialization in Canada and the U.S. He had a recent publication in Psychological Assessment on these effects on a commonly used measure of personality pathology. Professor Bagby is also collaborating with researchers in the Netherlands and Massachusetts on meta-analytic studies on the moderating and mediating effects of personality on different evidence-based treatments for major depression.

PROFESSOR AMANDA ULIASZEK

Professor Uliaszek is a co-applicant on a \$906,394 CIHR Transitions in Care Team Grant to examine the process of providing acute mental health care navigation to university students. She is also newly appointed to the role of Associate Director of Research for Inlight – the University of Toronto’s Institutional Strategic Initiative on Student Mental Health. Professor Uliaszek continues her role of Program Coordinator for the Department of Psychological Clinical Science.

Faculty Highlights (cont.,)



Clinical Psychology Students

2022 YEAR-IN-REVIEW | P.7

MASTERS



Tyler Brown, MA1
Supervisor: Konstantine Zakzanis
Research: *neuropsychology, substance use disorder, abstinence, functional impairment.*



Orly Lipsitz, MA2
Supervisor: Anthony Ruocco
Research: *psychopathology, neurocognition, functional disability*



Etinosa Oliogu, MA1
Supervisor: Anthony Ruocco
Research: *cognitive functioning and self-harm lethality.*



Melanie Mascarenhas, MA2
Supervisors: Konstantine Zakzanis & Zindel Segal
Research: *neuropsychology, traumatic brain injury, mindfulness-based therapies, functional impairment, malingering*



Aqsa Zahid, MA1
Supervisor: Michael Best
Research: *schizophrenia, psychosis, stigma, cognitive biases*



Maya Amestoy, MA2
Supervisor: Amanda Uliaszek
Research: *borderline personality disorder, stigma, emotion dysregulation*



Sarah Mullin, MA1
Supervisors: Jennifer Rabin & Konstantine Zakzanis
Research: *neuromodulation, neuropsychological assessment, deep brain stimulation, alcohol use disorder, substance use disorder*



Jessica D'Arcey, MA2
Supervisor: Michael Best
Research: *recovery in psychosis, Understanding Mechanisms of Psychosis, Digital Mental Health*



Maya Ahia, MA1
Supervisor: Amanda Uliaszek
Research: *student mental health research, intersectionality, and disability studies*



Danielle Downie, MA1
Supervisors: Lena Quilty & Anthony Ruocco
Research: *psychopathology, substance use disorder*

Clinical Psychology Students

2022 YEAR-IN-REVIEW | P.8

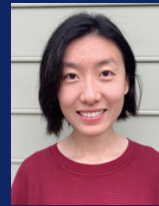
DOCTORAL



Cody Cane, PhD1

Supervisors: Anthony Ruocco & Andy Lee

Research: *neuroimaging, transdiagnostic psychopathology, cognitive control*



Zoey Zuo, PhD2

Supervisors: Zindel Segal & Norman Farb

Research: *cognitive distortion, rumination, wellbeing, natural language processing, mobile mental health support*



Shreya Jagtap, PhD1

Supervisor: Michael Best

Research: *psychosis, delusions, crime, violence*



Sylvia Romanowska, PhD2

Supervisor: Michael Best

Research: *psychosis, neurocognition, intervention*



Talia Leibovitz, PhD1

Supervisor: Michael Best

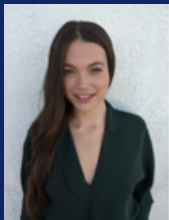
Research: *psychosis, schizophrenia, cognitive behavioural therapy, mechanisms*



Daniel Krzyzanowski, PhD3

Supervisors: Gary Remington & Vina Goghari

Research: *schizophrenia, values, subjective well-being, happiness, lifespan development*



Danika Quesnel, PhD1

Supervisors: Catherine Sabiston & Amanda Uliaszek

Research: *eating disorders, physical activity and mental health, health promotion, novel treatment interventions, knowledge translation*



Alina Patel, PhD3

Supervisors: Lena Quilty & Zindel Segal

Research: *repetitive negative thinking, mindfulness, depression, anxiety*



Sabrina Adamo, PhD1

Supervisors: Melanie Cohn & Anthony Ruocco

Research: *Parkinson's disease, visual hallucinations, mild cognitive impairment*



Sarah Saperia, PhD3

Supervisors: Konstantine Zakzanis & George Foussias

Research: *schizophrenia-spectrum disorders; negative symptoms; motivation deficits; treatment targets*



Willem Le Duc, PhD2

Supervisors: Andy Lee & Anthony Ruocco

Research: *approach-avoidance conflict, hippocampus, lesions, memory, decision-making*



Robert Aidelbaum, PhD3

Supervisor: Michael Best

Research: *social motivation, social cognition, social functioning, schizophrenia*

Clinical Psychology Students

2022 YEAR-IN-REVIEW | P.9

DOCTORAL



Ivy Cho, PhD4
Supervisor: Vina Goghari
Research: *cognitive control, healthy aging, mood disorders*



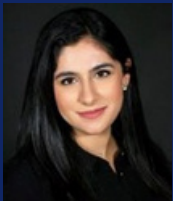
Kevin Hamdullahpur, PhD5
Supervisor: Amanda Uliaszek
Research: *borderline personality disorder, emotion dysregulation, cannabis use*



Sonja Chu, PhD4
Supervisors: Andy Lee & Vina Goghari
Research: *fMRI, approach-avoidance conflict, anxiety*



Angela Sekely, PhD5
Supervisor: Konstantine Zakzanis
Research: *neuropsychology, psychometrics, traumatic brain injury, brain tumour*



Tahira Gulamani, PhD4
Supervisor: Amanda Uliaszek
Research: *emotion regulation, impulsivity, dialectical behaviour therapy, treatment mechanisms*



Laura Heath, PhD5
Supervisors: Robin Green & Amanda Uliaszek
Research: *traumatic brain injury, neuropsychology, rehabilitation*



Jacob Koudys, PhD4
Supervisors: Anthony Ruocco & Cendri Hutcherson
Research: *suicide, transdiagnostic psychopathology, decision making, impulsivity*



Thulasi Thiruchselvam, PhD5
Supervisors: Lena Quilty & Michael Bagby
Research: *depression, concurrent cannabis use, reward, stress*



Nicole Cosentino, PhD4
Supervisors: Marc Fournier & Amanda Uliaszek
Research: *interpersonal perception, authenticity, self-coherence, self-knowledge*



Kathleen Walsh, PhD6
Supervisors: Zindel Segal & Norman Farb
Research: *decentering, perspective taking, well-being, virtual mental health interventions*

MASTER OF ARTS

Sabrina Adamo

Supervisors: Melanie Cohn & Anthony Ruocco
Thesis: *Is Basal Forebrain Volume Loss Associated with Mild Cognitive Impairment, Visual Hallucinations, or Concomitant Symptomology in Advanced Parkinson's Disease?*

Shreya Jagtap

Supervisor: Michael Best
Thesis: *Examining the Influence of the Self-Referential Bias on Aberrant Salience and Jumping to Conclusions Bias in Individuals with Schizophrenia-Spectrum Disorders*

Cody Cane

Supervisors: Anthony Ruocco & Andy Lee
Thesis: *An Exploratory Study of Functional Brain Activation Underlying Cognitive Control in Major Depressive Disorder and Borderline Personality Disorder*

Talia Leibovitz

Supervisor: Michael Best
Thesis: *Comparing the Effects of Cognitive Restructuring, Cognitive Defusion, and Thought Monitoring on Voice-Hearing Distress in Psychosis*

DOCTOR OF PHILOSOPHY



Dean Carcone

Supervisors: Anthony Ruocco & Andy Lee
Dissertation: *The Transdiagnostic Relationship of Cumulative Lifetime Stress with Memory, the Hippocampus, and Personality Psychopathology*



Shauna Solomon-Krakus

Supervisors: Catherine Sabiston & Amanda Uliaszek
Dissertation: *Self-Critical Perfectionism and Body-Related Self-Conscious Emotions: Refining the Transdiagnostic Cognitive Behavioural Model of Eating Disorders*



Tara Gralnick

Supervisor: Amanda Uliaszek
Dissertation: *Development and Evaluation of Therapeutic Assessment for Universal Personality Traits: Extending Therapeutic Assessment Techniques to Address Five-Factor Model Personality*



Angela Sekely

Supervisor: Konstantine Zakzanis
Dissertation: *Neurocognitive, Psychological, and Functional Outcomes in Patients with Meningioma*



Matthew McPhee

Supervisors: Christian Hendershot & Michael Bagby
Dissertation: *The Acute Effects of Alcohol on Response Inhibition: An Evaluation of Meta-Analytic and Laboratory-Based Outcomes*



Amanda Ferguson

Supervisors: Michael Inzlicht & Zindel Segal
Dissertation: *The Empathy Selection Task: Evaluating Empathy as a Subjective Value-Based Choice*



Matthew Quitalol

Supervisors: Marc Fournier & Amanda Uliaszek
Dissertation: *Blind Spots in Personality Traits and Interpersonal Problems: The Roles of Narcissism And Self-Esteem*



Philip Desormeau

Supervisors: Norman Farb & Zindel Segal
Dissertation: *Unpacking Emotion Regulation: Associations Among Symptom Burden, Strategy Implementation Beliefs, and Strategy Usage*

Student Highlights

PRESENTATIONS

Student names in bold

Amestoy, M., Gulamani, T., & Uliaszek, A. A., (2022). *Distress Tolerance, Mindfulness, and Emotion Regulation as targets of change in group therapy*. Poster presentation at the Association for Behavioral and Cognitive Therapies. New York City, NY, USA.

Amestoy, M. E., Gulamani, T., & Uliaszek, A. A. (2022, November 17-20). *Distress tolerance, mindfulness, and emotion regulation as targets of change in group therapy*. In A. Uliaszek (Chair), *Exploration of treatment mechanisms of change and neural activation in borderline personality disorder and general personality pathology*. Symposium to be presented at the 56th Annual Association for Behavioral and Cognitive Therapies (ABCT) Convention, New York, NY.

Amestoy, M. E., Magurno, A., Navarre, K. M., Lawley, A. J., Sullivan, S., & Uliaszek, A. A. (2022, August 11). *Borderline personality disorder and stigma research: Co-designing interventions and research protocols* [Oral Presentation]. Clinical Research and Evaluation Cluster Research Day, Virtual.

Amestoy, M. E., & Uliaszek, A. A. (2022, May 6-7). *Exploring the stigmatization of borderline personality disorder among the general public* [Oral presentation]. Annual Interdisciplinary Graduate Research and Discovery Conference (IGRAD), Virtual.

Amestoy, M. E., & Lau, P. H. (2022, January 26). *Factors associated with patient retention and non-completion in psychosocial treatment of borderline personality disorder: A systematic review* [Poster presentation]. University of Toronto PGSA Symposium, Virtual.

Amestoy, M. E. & Lau, P. H. (2022, January 26). *Factors associated with patient retention and non-completion in psychosocial treatment of borderline personality disorder: A systematic review* [Oral presentation]. University of Toronto PGSA Symposium, Virtual.

Amestoy, M. E., & Lau, P. H. (2022, June 17-19). *Effects of perceived stress on insomnia: The moderating role of repetitive negative thinking* [Poster presentation]. Canadian Psychological Association 83rd Annual Convention, Calgary, AB, Canada.

Amestoy, M. E., & Lau, P. H. (2022, June 17-19). *A systematic review of factors influencing patient retention and treatment non-completion in psychosocial treatment for borderline personality disorder* [Poster presentation]. Canadian Psychological Association 83rd Annual Convention, Calgary, AB, Canada.

Amestoy, M. E., & Lau, P. H. (2022, June 17-19). *A systematic review of factors influencing patient retention and treatment non-completion in psychosocial treatment for borderline personality disorder* [Poster presentation]. Canadian Psychological Association 83rd Annual Convention, Calgary, AB, Canada.

Amestoy, M. E., & Uliaszek, A. A. (2022, June 16-17). *The role of self-hatred, worthlessness, and shame in the relationship between emotion dysregulation and suicidal ideation in a sample of depressed adults* [Poster presentation]. Suicide Research Symposium, Virtual.

Amestoy, M. E., & Lau, P. H. (2022, January 26). *Factors associated with patient retention and non-completion in psychosocial treatment of borderline personality disorder: A systematic review* [Poster presentation]. University of Toronto PGSA Symposium, Virtual.

Cosentino, N. & Fournier, M.A. (2022, July). *The implications of authenticity for interpersonal self-congruence*. Talk presented at the 25th Annual Meeting of the Society for Interpersonal Theory and Research, Virtual Conference.

Cosentino, N. (2022, October). *Authenticity and interpersonal self-congruence*. Talk presented at North York General Hospital's Grand Mental Health Rounds, North York General Hospital, Toronto, ON.

D'Arcey, J.N., Romanowska, S., Leibovitz, T., Jagtap, S., Onno, K., Best, M.W. (2022, November) *The Feasibility of Digitally Delivered Cognitive Behavioural Therapy for Psychosis: A Systematic Review*. Poster Presentation at the Annual Association for Behavioural and Cognitive Therapies, New York City, United States of America

D'Arcey, J.N., Jagtap, S., & Best, M.W. (2022, April) *Cognitive Schemas in Schizotypy: A Cross Sectional Design*. Poster Presentation at the Annual Schizophrenia International Research Society Congress, Florence, Italy.

D'Arcey, J.N., Asuncion, T., Zahid, A., Tackaberry-Giddens, L., Ishak, M., Foussias, G., Kidd, S.A. (2022, April) *The Digital Mental Health Landscape in the Treatment of Schizophrenia Spectrum Disorders: A Systematic Scoping Review*. Poster Presentation at the Annual Schizophrenia International Research Society Congress, Florence, Italy.

Gulamani, T., Uliaszek, A. A. (2022). *The Joint Role of Impulsivity and Emotion Dysregulation: A Cluster Analytic Approach*. Poster presentation at the Society for Interpersonal Research. Philadelphia, PA, USA.

Heath L.M, Kidwai R, Green R. (Feb, 2022). *Trajectories of depression and anxiety from 2-24+ months following moderate to severe traumatic brain injury*. In Williams, H. (Chair). International Neuropsychological Society 50th Annual Meeting (Virtual).

Heath L.M, Kidwai M.R, Green R. (June 2022). *Changes in anxiety and depression from 2-36 months after moderate to severe traumatic brain injury*. 2022 Canadian Student Health Research Forum, Winnipeg, MB.

Jagtap, S., D'Arcey, J., & Best, M. (2022, April). *Examining the Relationship between Positive and Negative Dimensions of Schizotypy, Loneliness, Depression, and Perceived Social Support*. Poster presented at Schizophrenia International Research Society 2022 Annual Congress, Florence, Italy.

Jagtap, S. (2022, August). *It's All About Me: The Role of Self-Referential Thinking in the Formation and Maintenance of Delusions in Psychosis*. Talk presented at the Clinical Research Evaluation Cluster Annual Research Day 2022, Toronto, ON.

Jagtap, S., Shamblaw, A., Rumas, R., & Michael W. Best. (2022, May) *When the Google search goes too far: Examining the mediating role of catastrophic cognitions in the relationship between information seeking and health anxiety during the covid-19 pandemic*. Poster presented at the Canadian Association of Cognitive and Behavioral Therapies 2022 Virtual Convention.

Lipsitz, O., Koudys, J. W., Carcone, D., Gardhouse, K., Ruocco, A. C. (2022, November). *Predictors of suicidal ideation and suicide attempts in comorbid borderline personality disorder and major depressive disorder*. Poster presentation at Association for Behavioural and Cognitive Therapies Annual Convention, New York, NY.

Millett, G., D'Amico, D., **Amestoy, M. E., Gryspeerdt, C., & Fiocco, A. J.** (2022, June 17-19). *The effect of group-based mindfulness programs on executive functioning in adults: A meta-analysis* [Poster presentation]. Canadian Psychological Association 83rd Annual Convention, Calgary, AB, Canada.

Obierefu, P. O., Bagby, R. M., **Zahid, A., Lau, S. C. L., & Stone, S.** (2022, June). *Assessing the Effects of Black Racialization of the MMPI-3*. Brief report presented at the 57th Annual Symposium on Recent MMPI Research, Minneapolis, Minnesota, United States of America.

Patel, A., Lau, P., Daros, A., Perkovic, S., Hope, I., Irwin, S., Laposa, J., & Quilty, L.C. (2022, September). *Changes in Rumination During virtual Outpatient Treatment for Depression*. Poster presented at the Society for Research in Psychopathology, Virtual Conference.

Quesnel, D. A., Huelleman, K., Cooper, M., & Calogero, M.R (2022, June), *Bridging the gap in clinician knowledge in managing dysfunctional exercise in eating disorders*, Oral Presentation at Academy for Eating Disorders, International Conference on Eating Disorder, Virtual

Romanowska, S., & Best, M. W. *Examining the Role of Failure and Success Experiences on Task Persistence and Neurocognition in Schizophrenia*. Poster presented at the 2022 Hybrid Schizophrenia International Research Congress, Florence, Italy. April 7, 2022.

Saperia S, Da Silva S, Siddiqui I, Voineskos A, Remington G, Zaksanis K, Foussias G. (2022). *Defeatist Performance Beliefs and the Cognitive Pathways to Motivation Deficits in Schizophrenia*. Presented at the Congress of Schizophrenia International Research Society (SIRS), Florence, Italy.

Solomon-Krakus, S., Uliaszek, A. A., & Sabiston, C. M. (2022, May). *The unique associations between multidimensional perfectionism and facets of restrictive eating among undergraduate women*. Poster presented at McMaster University's 33rd Annual Psychiatry Research & Scholarship Day, Hamilton, Ontario, Canada. *Poster category winner for Psychology and Psychiatry Residents.

Traynor, J. M., **Koudys, J.,** Weichel, M., Prompiengchai, S., Bousleiman, S., **Lipsitz, O.,** Blumberger, D., Daskalakis, Z. J., & Ruocco, A. C. (Scheduled; 2022, December). *A systematic review and meta-analysis of non-invasive neurostimulation interventions for suicide ideation: Preliminary results*. Poster presented at the conference of the American College of Neuropsychopharmacology (ACNP), Phoenix, AZ.

Zahid, A., & Lau, S. C. L., Taylor, G. J., & Bagby, R. M. (2022, September). *Validating the Alexithymia Construct in South Asian and East Asian Cultures*. Poster presented at the 26th World Congress of the International College of Psychosomatic Medicine (ICPM), Rochester, New York, United States of America.

Zahid, A., & Taylor, G. J., Stone, S., & Bagby, R. M. (2022, September). *A Comparative Examination of the Construct Validity of the Toronto Alexithymia Scale (TAS-20) and the Perth Alexithymia Questionnaire (PAQ)*. Oral presentation at the 26th World Congress of the International College of Psychosomatic Medicine (ICPM), Rochester, New York, United States of America.

Zahid, A., Park, S., Lau, S. C. L., & Bagby, R. M. (2022, June). *Detecting Under-reporting in Canadian Firefighter Applicants: A Comparison of the MMPI-2-RF/MMPI-3, PAI, and NEO PI-R/NEO-PI-3 Validity Scales*. Brief report presented at the 57th Annual Symposium on Recent MMPI Research, Minneapolis, Minnesota, United States of America.

Zahid, A., & Bagby, R. M. (2022, April). *Revising the DSM-5 Alternative Model for Personality Disorders Diagnostic Criteria for Schizotypal Personality Disorder*. Late-Breaking poster presented at the 2022 Hybrid Congress of the Schizophrenia International Research Society, Florence, Italy.

Zahid, A., & Best, M. W. (2022, April). *The association between schizotypal personality traits and cognitive biases*. Late-Breaking poster presented at the 2022 Hybrid Congress of the Schizophrenia International Research Society, Florence, Italy.

GRANTS, AWARDS & RECOGNITIONS

AQSA ZAHID

1. Outstanding Trainee Poster Award (\$200) Awarded by the International College of Psychosomatic Medicine
2. Bassili Graduate Award (\$3,500) Graduate Department of Psychological Clinical Science, UTSC

DANIKA QUESNSEL

1. Bassili Graduate Award (\$3,500) Graduate Department of Psychological Clinical Science, UTSC
2. Canada Graduate Scholarship (Doctoral) – SSHRC (\$80,000)

JESSICA D'ARCY

1. Awarded the Koerner Scholarship
2. Canada Graduate Scholarship (Masters) – CIHR (\$17,500)

MAYA AMESTOY

1. School of Graduate Studies Conference Grant (\$640)
2. CPA Clinical Section Best Student Conference Presentation Award (\$200)
3. CPA Clinical Section Student Travel Award (\$300)

MELANIE MASCARENHAS

1. Canada Graduate Scholarship (Masters) – CIHR (\$17,500)

ORLY LIPSITZ

1. UTSC Psychology Travel and Training Grant (\$500)
2. UTSC Graduate Student Research Award – MA (\$2,000)
3. Ontario Graduate Scholarship (\$15,000)

GRANTS, AWARDS & RECOGNITIONS

ROBERT AIDELBAUM

1. SSHRC Doctoral Fellowship (\$60,000)

SHREYA JAGTAP

1. Ontario Graduate Scholarship (\$15,000)

TAHIRA GULAMANI

1. Research Assistantship - University of Toronto Pedagogies of Inclusive Excellence Fund (\$1000)

WILLEM LE DUC

1. UTSC Psychology Travel and Training Grant (\$500)

TYLER BROWN

1. Mitacs Accelerate Fellowship (\$90,000)

ETINOSA OLIOGU

1. Founders Award (\$10,000)

2022 Funding Awarded

CORE CLINICAL PSYCHOLOGY FACULTY

This year, multiple faculty received new research grants. The department would like to recognize these faculty, as well as those faculty who currently hold grants awarded in previous years.

Recipient	Sponsor	Funding
Best, Michael	CIHR (2022-2027) (Nominated Principal Applicant)	\$956, 250
Best, Michael	CIHR (2022-2026) (Co-Principal Applicant)	\$852, 000
Best, Michael	Bell Let's Talk - Brain Canada Mental Health Research Program (Co-Principal Applicant)	\$950,000
Best, Michael	UTSC Faculty Supervisor Research Support Grant	\$40, 000
Uliaszek, Amanda	Canadian Institutes of Health Research Transitions in Care Team Grant (Co-Applicant)	\$906, 394
Zakzanis, Konstantine	MITACS Accelerate Ontario Research Fund (Sole Principal Investigator)	\$90, 000
Total		\$3,794,644

2022 Publications

Alphabetically sorted. Student names in bold, faculty names in bold and underlined, associate members in bold and italicized

Research Papers (45)

- Agne, A., **Quesnel, D. A.**, Larumbe-Zabala, E., Olmedillas, H., Graell-Berna, M., Perez, M., & Fernandez-del-Valle, M. (2022). Progressive resistance exercise as complementary therapy improves quality of life and body composition in anorexia nervosa: A randomized controlled trial. *Complementary Therapies in Clinical Practice*, 48. <https://doi.org/10.1016/j.ctcp.2022.101576>
- Aidelbaum, R.**, & **Goghari, V. M.** (2022). A Visual Task-Based Assessment of Theory of Mind and Social perception Within Bipolar Disorder. *The Journal of Nervous and Mental Disease*, 210(1), 37-44. <https://doi.org/10.1097/nmd.0000000000001408>
- Aidelbaum, R.**, Labelle, A., Choueiry, J., & Knott, V. (2022). The acute dose and baseline amplitude-dependent effects of CDP-choline on deviance detection (MMN) in chronic schizophrenia: A pilot study. *Experimental and Clinical Psychopharmacology*, 30(2), 235-248. <https://doi.org/10.1037/pha0000418>
- Bagby, R. M.**, & **Zahid, A.** (2022). Revising the Trait Model of the Alternative Model of Personality Disorders: A Commentary on Clark and Watson's Structural Review. *Personality Disorders: Theory, Research, and Treatment*, 13(4), 337-339. <https://doi.org/10.1037/per0000587>
- Bagby, R. M.**, Keeley, J. W., Williams, C. C., Mortezaei, A., Ryder, A. G., & Sellbom, M. (2022). Evaluating the measurement invariance of the Personality Inventory for DSM-5 (PID-5) in Black Americans and White Americans. *Psychological Assessment*, 34(1), 82-90. <https://doi.org/10.1037/pas0001085>
- Benitah, K., Siegel, A. N., **Lipsitz, O.**, Rodrigues, N. B., Meshkat, S., Lee, Y., ... & Rosenblat, J. D. (2022). Sex Differences in Ketamine's Therapeutic Effects for Mood Disorders: A Systematic Review. *Psychiatry Research*, 312. <https://doi.org/10.1016/j.psychres.2022.114579>
- Boggs, J., Ritzwoler, D. Beck, A. Dimidjian, S & **Segal, Z.** (2022). Cost Effectiveness of a Web-Based Treatment for Residual Depressive Symptoms - Mindful Mood Balance. *Psychiatric Services*, 73(2), 158-164. <https://doi.org/10.1176/appi.ps.202000419>
- Burchett, D.L., & **Bagby, R. M.** (2022). Assessing Negative Response Bias: A Review of the Noncredible Overreporting Scales of the MMPI-2-RF and MMPI-3. *Psychological Injury and Law*, 15, 22-36. <https://doi.org/10.1007/s12207-022-09444-2>
- Carcone D, Gardhouse K, **Goghari, V. M.**, **Lee A. C. H.**, & **Ruocco, A. C.** (2022). The transdiagnostic relationship of cumulative lifetime stress with memory, the hippocampus, and personality psychopathology. *Journal of Psychiatric Research*, 155, 483-492. <https://doi.org/10.1016/j.jpsychires.2022.09.005>
- D'Amico, D., **Amestoy, M. E.**, & Fiocco, A. J. (2022). The mediating role of allostatic load in the relationship between early life adversity and cognitive function in middle-aged and older adults. *Psychoneuroendocrinology*, 141. <https://doi.org/10.1016/j.psyneuen.2022.105761>
- Daros, A. R., Pereira, B. J., Khan, D., **Ruocco, A. C.**, **Quilty, L. C.**, & Wardell, J. D. (2022). Daily associations between cannabis use and alcohol use in young adults: The moderating role of self-report and behavioral measures of impulsivity. *Addiction Research & Theory*, 30(2), 79-88. <https://doi.org/10.1080/16066359.2021.1939314>
- De la Salle, S., Shah, U., Hyde, M., Baysarowich, R., **Aidelbaum, R.**, Choueiry, J., & Knott, V. (2022). Synchronized Auditory Gamma Response to Frontal Transcranial Direct Current Stimulation (tDCS) and its Inter-Individual Variation in Healthy Humans. *Clinical EEG and Neuroscience*, 53(6), 472-483. <https://doi.org/10.1177/15500594221098285>
- Di Domenico, S. I., **Fournier, M. A.**, **Rodrigo, A. H.**, Dong, M., Ayaz, H., Ryan, R. M., & **Ruocco, A. C.** (2022). Medial prefrontal activity during self-other judgments is modulated by relationship need fulfillment. *Social Neuroscience*, 173 (3), 236-245. <https://doi.org/10.1080/17470919.2022.2074135>
- Di Vincenzo, J. D., **Lipsitz, O.**, Rodrigues, N. B., Jones, B. D., Gill, H., Lee, Y., ... & Rosenblat, J. D. (2022). Frequency analysis of symptomatic worsening following ketamine infusions for treatment resistant depression in a real-world sample: Results from the Canadian Rapid Treatment Center of Excellence. *Psychiatry Research*, 307. <https://doi.org/10.1016/j.psychres.2021.114321>
- Farb, N.**, **Desormeau, P.**, Anderson, A & **Segal, Z.** (2022). Static and treatment-responsive brain biomarkers of depression relapse vulnerability following prophylactic psychotherapy: Evidence from a randomized controlled trial. *Neuroimage Clinical*, 34. <https://doi.org/10.1016/j.nicl.2022.102969>
- Fiorito, M., Aleman, A., Blasi, G, Bourque, J., Cao, H., Chan, R. C. K., Chowdury, A., Conrod, P., Diwadkar V. A., **Goghari, V. M.**.. Are Brain Responses to Emotion a Reliable Endophenotype of Schizophrenia? An Image-Based Functional Magnetic Resonance Imaging Meta-analysis. (2022). *Biological Psychiatry*, 93(2), 167-177. <https://doi.org/10.1016/j.biopsych.2022.06.013>
- Fournier, J. Forand, N. Wang, Z. Li, Z. Iyengar, S. DeRubeis, R. Shelton, R. Amsterdam, J. Jarrett, R. Vittengl, J. **Segal, Z.** Dimidjian, S. Shea, T, Dobson, K. & Hollon, S. (2022). Initial Severity and Depressive Relapse in Cognitive Behavioral Therapy and Antidepressant Medications: An Individual Patient Data Meta-analysis. *Cognitive Therapy and Research*, 46(6), 517-531. <https://doi.org/10.1007/s10608-021-10281-x>
- Goghari, V. M.** (2022). Excellence, Access, and the Public Good: Building Socially Responsive Admissions Practices for Health Science Programs. *Psychiatry Research*, 311. <https://doi.org/10.1016/j.psychres.2022.114497>
- Hawley, L.** Rappaport, L. Padesky, C. Hollon, S. Mancuso, E. Laposa, J. Brozina, K & **Segal, Z.** (2022). Self-critical perfectionism, dependency and entropy during cognitive behavioural therapy for depression. *British Journal of Clinical Psychology*, (61)4, 911-928. <https://doi.org/10.1111/bjc.12366>
- Jagtap, S.**, **Romanowska, S.**, **Leibovitz, T.**, Onno, K., Burhan, A., & **Best, M. W.** (2022). Can cognitive remediation for schizophrenia be delivered remotely? A systematic review examining feasibility and acceptability of remote interventions. *Schizophrenia Research: Cognition*, 28. <https://doi.org/10.1016/j.scog.2022.100238>
- Krzyzanowski, D. J.**, Wu, S., Agarwal, S. M., **Remington, G.**, & **Goghari, V. M.** (2022). Trait anhedonia in schizophrenia: A systematic review and comparative meta-analysis. *Schizophrenia Bulletin*, 48(2), 335-346. <https://doi.org/10.1093/schbul/sbab136>
- Krzyzanowski, D.**, Kusi, M., & **Goghari, V. M.** (2022). Malleability of expectations of computerized cognitive training. *Personality and Individual Differences*, 196. <https://doi.org/10.1016/j.paid.2022.111737>

2022 Publications (cont.,)

- Krzyzanowski, D.**, Kusi, M., & **Goghari, V. M.** (2022). Malleability of expectations of computerized cognitive training. *Personality and Individual Differences*, 196. <https://doi.org/10.1016/j.paid.2022.111737>
- Koudys, J. W.**, & **Ruocco, A. C.** (2022). Executive functioning in adults with borderline personality disorder and first-degree biological relatives. *The World Journal of Biological Psychiatry*, 23(5), 387-400. <https://doi.org/10.1080/15622975.2021.2012396>
- Kuo, J. R., Fitzpatrick, S., Ip, J., & **Uliaszek, A. A.** (2022). The who and what of validation: An examination of validation and invalidation of specific emotions and the moderating effect of emotion dysregulation. *Borderline Personality Disorder and Emotion Dysregulation*, 9, 1-13. <https://doi.org/10.1186/s40479-022-00185-x>
- Kusi, M., Wong, S. T. S., Percival, C. M., Zurrin, R., Roes, M. M., Woodward, T. S. & **Goghari, V. M.** (2022). Altered activity in functional brain networks involved in lexical decision making in bipolar disorder: An fMRI case-control study. *Journal of Affective Disorders*, 317, 59-71. <https://doi.org/10.1016/j.jad.2022.08.040>
- Lau, P. H., Marway, O., Carney, A., Carmona, E. N., **Amestoy, M.**, & Carney, C. E. (2022). Investigating the antidepressant effects of CBT-I in those with major depressive and insomnia disorders. *Journal of Affective Disorders Reports*, 9. <https://doi.org/10.1016/j.jadr.2022.100366>
- Lepock, J. R., Mizrahi, R., **Gerritsen, C. J.**, **Bagby, R. M.**, Maheandiran, M., Ahmed, S., ... & Kiang, M. (2022). N400 event-related brain potential and functional outcome in persons at clinical high risk for psychosis: a longitudinal study. *Psychiatry and Clinical Neurosciences*, 76(4), 114-121. <https://doi.org/10.1111/pcn.13330>
- McIntyre, R. S., **Lipsitz, O.**, Rodrigues, N. B., Subramaniapillai, M., Nasri, F., Lee, Y., ... & McCue, M. (2022). An App-Based Digit Symbol Substitution Test for Assessment of Cognitive Deficits in Adults with Major Depressive Disorder: Evaluation Study. *JMIR Mental Health*, 9(10). <https://doi.org/10.2196%2F33871>
- Quesnel, D. A.**, Hefner, T., Fernandez-del-Valle, M., & McComb, J. (2022). Menstrual dysfunction in youth female athletes and their management in the context of models of energy deficiency. *The Health & Fitness Journal of Canada*, 15(1), 3-17. <https://doi.org/10.14288/hfj.v15i1.361>
- Rodrigo, A. H., Di Domenico, S. I., Wright, L., Page-Gould, E., **Fournier, M. A.**, Ayaz, H., & **Ruocco, A. C.** (2022). Interpersonal traits and the neural representations of cognitive control in the prefrontal cortex. *Cognitive, Affective, and Behavioral Neuroscience*, 22(5), 1001-1020. <https://doi.org/10.3758/s13415-022-00986-1>
- Romanowska, S.**, **Best, M. W.**, Bowie, C. R., Depp, C. A., Patterson, T. L., Penn, D. L., Pinkham A. E., & Harvey, P. D. (2022). Examining the Association of Life Course Neurocognitive Ability with Real-World Functioning in Schizophrenia-Spectrum Disorders. *Schizophrenia Research: Cognition*, 29. <https://doi.org/10.1016%2Fj.scog.2022.100254>
- Sekely, A.**, Tsang, D. S., Mabbott, D., Kongkham, P., Zadeh, G., **Zakzanis, K. K.**, & **Edelstein, K.** (2022). Radiation Dosimetry to Circumscribed Brain Regions and Neurocognitive Function in Patients with Meningioma. *Neuro-Oncology Practice*, 9(3), 208-218. <https://doi.org/10.1093/nop/npac011>
- Sekely, A.**, **Zakzanis, K. K.**, Mabbott, D., Tsang, D. S., Kongkham, P., Zadeh, G., & **Edelstein, K.** (2022). Long-term neurocognitive, psychological, and return to work outcomes in meningioma patients. *Journal of Supportive Care in Cancer*, 30(5). <https://doi.org/10.1007/s00520-022-06838-5>
- Sekely, A.**, Dhillon, S., & **Zakzanis, K. K.** (2022). The effect of diagnostic terminology on cognitive, emotional, and somatic functioning following mild brain injury. *Applied Neuropsychology: Adult*, 29, 499-508.
- Shamblaw A & **Segal, Z.** (2022). Mindfulness Meditation in the Long-Term Management of Mood Disorders: Contributions by Canadian Researchers. *Canadian Journal of Behavioural Science*. 54(2), 142-151. <https://doi.org/10.1037/cbs0000286>
- Siddiqui, I., **Remington, G.**, **Saperia S.**, Da Silva, S., Fletcher, P. J., Voineskos, A. N., **Zakzanis, K. K.**, **Foussias, G.** (2022). Behavioural phenotypes of intrinsic motivation in schizophrenia determined by cluster analysis of objectively quantified real-world performance. *Schizophrenia*, 8(1), 1-15. <https://doi.org/10.1038/s41537-022-00294-0>
- Solomon-Krakus, S.**, **Uliaszek, A. A.**, & **Sabiston, C.** (2022). General and body-related self-conscious emotions predict facets of restrictive eating in undergraduate women. *Eating Behaviours*, 45. <https://doi.org/10.1016/j.eatbeh.2022.101624>
- Solomon-Krakus, S.**, **Uliaszek, A. A.**, & **Sabiston, C. M.** (2022). The intensity and intolerance of general and body-related self-conscious emotions predicting facets of restrictive eating. *Eating Behaviors*, 45. <https://doi.org/10.1016/j.eatbeh.2022.101624>
- Solomon-Krakus, S.**, **Uliaszek, A. A.**, & **Sabiston, C. M.** (2022). The differential associations between self-critical perfectionism, personal standards perfectionism, and facets of restrictive eating. *Personality and Individual Differences*, 184. <https://doi.org/10.1016/j.paid.2021.111178>
- St-Amour, S., **Ruocco, A. C.**, Cailhol, L., & Bernard, P. (2022). Acute effect of physical exercise on negative affect in borderline personality disorder: A pilot study. *Clinical Psychology in Europe*, 4(2), 1-24. <https://doi.org/10.32872/cpe.7495>
- Uliaszek, A. A.**, Rashid, T., & Zarowsky, Z. (2022). The role of signature strengths in treatment outcome: Initial results from a large and diverse university sample. *Journal of Contemporary Psychotherapy*, 52(1), 15-21. <https://doi.org/10.1007/s10879-021-09523-6>
- Watson, D., Forbes, M. K., Levin-Aspenson, H. F., Ruggero, C. J., Kotelnikova, Y., Khoo, S., **Bagby, R. M.**, Sunderland, M., Patalay, P., & Kotov, R. (2022). The development of a preliminary HiTOP internalizing spectrum scale. *Assessment*, 29(1), 17-33. <https://doi.org/10.1177/10731911211003976>
- Williams, G., & **Uliaszek, A. A.** (2022). Measuring negative emotion differentiation via coded descriptions of emotional experience. *Assessment*, 29(6), 1144-1157. <https://doi.org/10.1177/10731911211003949>
- Zahid, A.**, Dhillon, S., & **Zakzanis, K. K.** (2022). Examining base rates of symptom endorsement and the roles of sex and depressive symptoms on the Structured Inventory of Malingered Symptomatology (SIMS) in a non-clinical population. *Psychological Injury and Law*. Advance online publication. <https://doi.org/10.1007/s12207-021-09439-5>

2022 Publications (cont.,)

Alphabetically sorted. Student names in bold, faculty names in bold and underlined, associate members in bold and italicized

Book Chapters

Bagby, R. M., **Zahid, A.**, & Sellbom, M. (2022). The Role of Assessment in Clinical Psychology. In G. Asmundson (Ed.) *Comprehensive Clinical Psychology* (2nd Ed., Vol. 4, pp. 1-12). Elsevier Inc. <https://doi.org/10.1016/B978-0-12-818697-8.00235-1>

Best, M. W., & **Romanowska, S.** (2022). Schizophrenia-Spectrum and Other Psychotic Disorders. In D. Dozois (Ed.) *Abnormal Psychology: Perspectives (7th Edition)*. Pearson.

Grimes, K. M., **Mullin, S. I.**, **Zakzanis, K. K.** (2022) The assessment of intelligence: What is behind us, before us and ahead of us. In G. Asmundson (Ed.), *Comprehensive Clinical Psychology (2nd ed., Vol 4, pp. 123-140)*. Elsevier.

Lam, J., & **Ruocco, A. C.** (2022). Biological risk factors for antisocial personality disorder. In D. W. Black & N. J. Kolla (Eds.), *Textbook of antisocial personality disorder* (pp. 161-183). Washington, DC: American Psychiatric Association Publishing.

MacDonald, D. E., **Solomon-Krakus, S.**, & Trottier, K. (2022). Eating Disorders. In D. J. A. Dozois (Ed.), *Perspectives in Psychopathology* (pp. 256-280). Toronto, ON: Pearson Education.

Uliaszek, A., **Gulamani, T.**, & Kuo, J. (2022). CBT Groups for Specific Populations and Presenting Problems: Borderline Personality Disorder. In *Cognitive-Behavioral Therapy in Groups 2nd Edition*. The Guilford Press.

Uliaszek, A., **Gulamani, T.**, & Kuo, J. (2022). CBT Groups for Specific Populations and Presenting Problems: Borderline Personality Disorder. In *Cognitive-Behavioral Therapy in Groups 2nd Edition*. The Guilford Press.



Psychological Clinical Science
UNIVERSITY OF TORONTO
SCARBOROUGH

