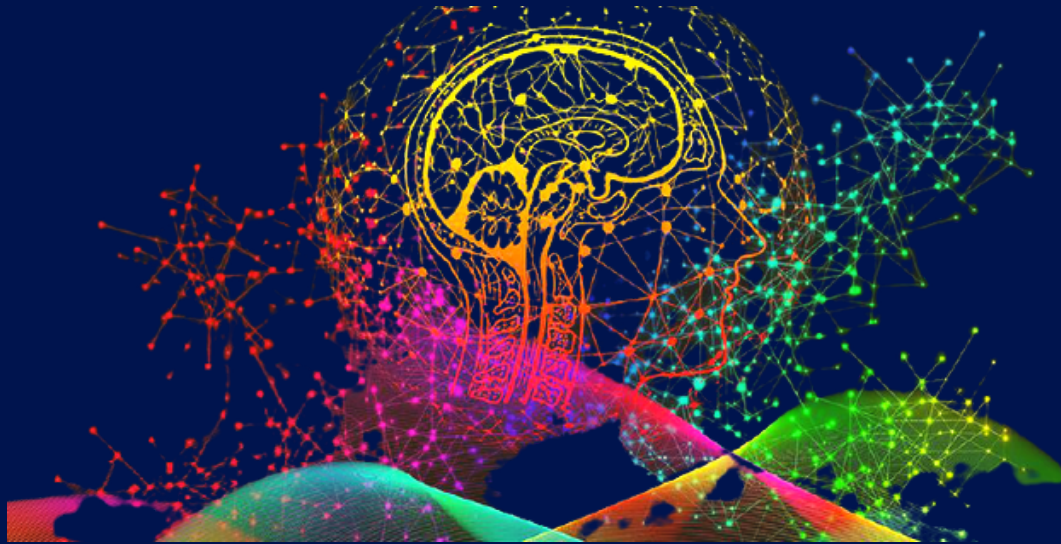


2021 YEAR IN REVIEW

*Graduate Department of Psychological Clinical Science at the
University of Toronto Scarborough*



IN THIS ISSUE

CHAIR'S MESSAGE | P.2

**CLINICAL PSYCHOLOGY
FACULTY | P.3**

FACULTY NEWS | P.4-7

**CLINICAL PSYCHOLOGY
STUDENTS | P.8-10**

CLASS OF 2021 | P.11-12

STUDENT NEWS | P.13-15

INTERNSHIP | P.16

**2021 FUNDING AWARDED |
P.17-18**

2021 PUBLICATIONS | P.19-21



Psychological Clinical Science
UNIVERSITY OF TORONTO
SCARBOROUGH

Chair's Message

Dear Students and Colleagues,

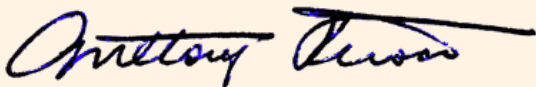
As I reflect on our Department's achievements in the last year, I am filled with feelings of gratitude and pride. In the face of the challenges caused by the ongoing pandemic, I am astounded (but not surprised) by the tenacity of our students, faculty, and staff. Our Department has risen to these challenges by innovating in our research and teaching methods, clinical training approaches, and departmental processes.

From prestigious awards and competitive grants to international lectures and influential articles, I am struck by the impact that our department continues to have on our campus, the wider University of Toronto community, and the Clinical Psychology field more broadly. Our successes could not be realized without a supportive community of graduate educators and leaders: I am grateful for the generous support of our administrative staff, core clinical psychology faculty, associate members, and the campus and University administration.

With a new year comes new opportunity and promise for our Department. I look forward to working collaboratively with all members of our training community to further innovate our graduate training, be socially responsive to the training needs of our students and local community, and celebrate our students' successes as they graduate and move into the profession.

I wish everyone a wonderful holiday season, and a happy and healthy 2022!

Warmest regards,

A handwritten signature in blue ink, reading "Anthony C. Ruocco". The signature is fluid and cursive, with a long horizontal stroke extending to the right.

Anthony C. Ruocco, Ph.D., C.Psych
Professor, Interim Graduate Chair and Director of Clinical Training
Department of Psychological Clinical Science
University of Toronto Scarborough

Clinical Psychology Faculty



R. Michael Bagby,
Ph.D., ABAP.,
C.Psych.
Professor



Michael Best,
Ph.D., C.Psych.
*Assistant
Professor*



Andrew Cooper,
Ph.D.
*Assistant
Professor,
Teaching Stream*



Jessica Dere,
Ph.D., C.Psych.
*Associate
Professor,
Teaching Stream &
Associate Chair,
EDI*



Vina Goghari,
Ph.D., C.Psych.
*Professor & Vice-
Dean, Research &
Program
Innovation, SGS*



**Anthony C.
Ruocco, Ph.D.,**
C.Psych.
*Professor, Interim
Graduate Chair &
Director of Clinical
Training*



Zindel Segal,
Ph.D., C.Psych.
*Distinguished
Professor of
Psychology in
Mood Disorders*



Amanda Uliaszek,
Ph.D., C.Psych.
*Associate Professor
& Program
Coordinator*



**Konstantine
Zakzanis, Ph.D.,**
C.Psych.
Professor

Associate Members

Ofer Agid, M.D.
Judith Anderson, Ph.D.
Sandra Black, O.C., O.Ont., M.D., FRCPC, FRSC
Alison Bury, Ph.D., C.Psych
Erika Carlson, Ph.D.
Melanie Cohn, Ph.D., C.Psych
William Cunningham, Ph.D.
Kim Edelstein, Ph.D., C.Psych
Suzanne Erb, Ph.D.
Norman Farb, Ph.D.
Donna Ferguson, Psy.D., C.Psych, ABPP
Niki Fitzgerald, Ph.D., C.Psych
Brett Ford, Ph.D.

Marc Fournier, Ph.D.
George Foussias, M.D., Ph.D.
Samantha Fuss, Ph.D., C.Psych
Cory Gerristen, Ph.D., C.Psych
Benjamin Goldstein, M.D., Ph.D.
Robin Green, Ph.D., C.Psych
Lance L. Hawley, Ph.D., C.Psych
Christian Hendershot, Ph.D., C.Psych
Cendri Hutcherson, Ph.D.
Michael Inzlicht, Ph.D.
Rutsuko Ito, Ph.D.
Sean Kidd, Ph.D., C.Psych
Nathan Kolla, M.D., Ph.D.
Andy Lee, Ph.D.

Longena Ng, Ph.D., C.Psych
Stephanie Penney, Ph.D., C.Psych
Lena C. Quilty, Ph.D., C.Psych
Jennifer Rabin, Ph.D., C.Psych
Tayyab Rashid, Ph.D., C.Psych
Neil A. Rector, Ph.D., C.Psych
Gary Remington, M.D., Ph.D.
Lesley A. Ruttan, Ph.D., C.Psych
Catherine Sabiston, Ph.D.
Mark Schmuckler, Ph.D.
Prathiba Shammi, Ph.D., C.Psych
Matthew Sloan, MD, MSc, FRCPC
Sandra Yuen, Ph.D., C.Psych

Faculty News



PROFESSOR R. MICHAEL BAGBY

Professor Bagby re-appointed as Associate Editor of *Psychological Assessment*

Professor Bagby was re-appointed for a six-year term as Associate Editor of *Psychological Assessment*. The journal is concerned with empirical research relevant to assessments conducted in the broad field of clinical psychology. Professor Bagby has served as an Associate Editor for the journal since 2015.

Professor Bagby appointed and re-appointed to four journals' Editorial Boards

Professor Bagby was re-appointed to three editorial boards in 2021, which include the *Journal of Personality Assessment*, *Assessment* and *Journal of Personality Disorders*. Additionally, Professor Bagby was newly appointed to the editorial board of *Personality Disorders: Theory, Research and Treatment (PD:TRT)*, beginning his term in 2022.

Professor Bagby awarded grant to examine the effects of black racialization on psychological tests

Professor Bagby was awarded a grant from the University Minnesota Press Test Division to examine the effects of black racialization on psychological tests of psychopathology. The study will involve travel to Nigeria to work in collaboration with Professor Tochukwu Orjiakor at the University of Nigeria, Nsukka, which Professor Bagby will undertake during his sabbatical in 2022. The data collection for the study has begun in Nigeria and marks a shift in Professor Bagby's research to examine the effects of black and indigenous racialization on the measurement of psychopathology.

PROFESSOR MICHAEL BEST

Professor Best's paper listed 2021 top 10 most downloaded article across all American Psychological Association (APA) journals

Professor Best's paper, 'Coping During the COVID-19 Pandemic: Relations with Mental Health and Quality of Life,' was listed as the top 10 most downloaded articles in 2021 across all of APA's 89 journals. Published in *Canadian Psychology*, the study explored how the COVID-19 pandemic caused widespread detrimental effects on mental health and quality of life, and examined the efficacy of 14 different coping strategies. The study found that positive reframing was the most beneficial coping strategy, suggesting that interventions focusing on reframing negative aspects of the pandemic may be most beneficial to improve general well-being.

PROFESSOR ANDREW COOPER

Professor Cooper presents poster at 50th annual European Association of Behavioural

Faculty News (cont'd)

and Cognitive Therapists (EABCT) Conference

Professor Cooper presented his poster digitally at the 50th annual EABCT conference in Belfast. EABCT is a non-profit organization committed to the empirically based principles and practice of behavioural and cognitive therapy approaches in health, social, education and related fields. Presented in September 2021, Professor Cooper's poster was titled, 'Help is just a text away: Evaluating preferences for Text-Based Cognitive Behavioral Therapy.'

PROFESSOR JESSICA DERE

Professor Dere joins the Board of Directors of the Canadian Association of Cognitive and Behavioural Therapies (CACBT)

In May 2021, Professor Dere joined the Board of Directors of the CACBT for a 3-year term. CACBT is a national organization of Canadian mental health professionals involved in the practice and theory of cognitive behaviour therapy (CBT) and focuses on the training, advancement of knowledge, advocacy, and accreditation in CBT. Professor Dere will support the CACBT as its Chair of Communications and Advocacy until 2024.

Professor Dere delivers online workshops on cultivating a culturally informed approach to mental health

Professor Dere delivered several online workshops in 2021 focused on cultivating a culturally informed approach to mental health. She was invited to deliver the keynote presentation and workshop at the 14th Annual Glickman Symposium hosted by the The Glickman Family Center for Child and Adolescent Psychiatry at Spring Harbor Hospit-

al in Maine, USA. As well, Professor Dere delivered workshops to the Clinical Psychology graduate program at Queen's University and as part of the annual conference of the Ontario Association for Marriage and Family Therapy.

PROFESSOR VINA GOGHARI

Professor Goghari recognized by the Canadian Psychological Association (CPA) and the Canadian Council of Professional Psychology Program (CCPPP)

Professor Goghari was awarded two prestigious national awards for her ongoing contributions to the field of Clinical Psychology. With CPA, she received the Award for Distinguished Contributions to Education and Training in Psychology. As well, with CCPPP, she received the Award for Excellence in Professional Training – Academic, which recognized her work on education and training at the national level.

PROFESSOR ANTHONY C. RUOCO

Professor Ruocco invited to present a "Meet The Scientist Webinar"

Professor Ruocco presented 'What We Are Learning About Brain Biology and Borderline Personality Disorder' in a "Meet The Scientist Webinar" for the Brain & Behavior Research Foundation in the United States. Attended by more than 700 participants, Professor Ruocco presented his latest research on the neurobiology of borderline personality disorder. He also presented the findings of his research funded by the Brain & Behavior Research Foundation on the treatment of suicidal ideation and depression in patients with borderline

Faculty News (cont'd)

personality disorder using magnetic seizure therapy.

Professor Ruocco Awarded a New Research Grant to Study Facial Emotion Perception

Professor Ruocco was awarded an Insight Development Grant from the Social Sciences and Humanities Research Council. The research comprises a series of studies that will investigate the reliability and validity of a novel new measure of facial emotion perception developed in Professor Ruocco's laboratory.

PROFESSOR ZINDEL SEGAL

Professor Segal invited to present his research for audiences in Japan and Singapore

Professor Segal was invited to present his research to audiences in Japan and Singapore (remotely). In July 2021, Professor Segal presented on 'Overlapping and Distinctive Mechanisms of Action in Mindfulness Based Cognitive Therapy' for the Japan Association for Cognitive Therapy. Additionally, in August 2021, he presented on 'Mindfulness Meditation in the Long-Term Management of Mood Disorders' at the Asia Pacific Mindfulness Conference.



PROFESSOR AMANDA ULIASZEK

Professor Uliaszek represents UTSC on Student and Youth Mental Health Research Initiative

Established in Fall 2020, Professor Uliaszek was selected to serve as a steering committee member representing UTSC on the University of Toronto's Student and Youth Mental Health Research Initiative. The Steering Committee is comprised of ten expert researchers in student and youth mental health from across the three U of T campuses, and works to utilize the committee's expertise in mental health research to establish an institutional strategic research initiative focused on student mental health.

Professor Uliaszek co-principal investigator on Global Connaught Research Grant

Professor Uliaszek was awarded a \$397,540 Global Connaught Research Grant as a co-principal investigator on a project titled, 'Building a Global Research Network to Advance Student & Youth Mental Health.' Funded until 2025, the Connaught Research Grant seeks to build a global research network to advance student and youth mental health.

Professor Uliaszek appointed Clinician Scientist at SickKids Centre for Community Mental Health

Professor Uliaszek was appointed as the Clinician Scientist at the SickKids Centre for Community Mental Health, where she serves as a Principal Investigator on a multi-site CIHR grant exploring an integrated care pathway for adolescents with depression. She is also leading many other program evaluation, measurement-based care, and research initiatives at SickKids.

Faculty News (cont'd)


PROFESSOR KONSTATINE ZAKZANIS

Professor Zakzanis awarded 5-year insight grant from the Social Sciences and Humanities Research Council (SSHRC)

Professor Zakzanis was the recipient of a 5-year SSHRC Insight Grant. The grant aims to support research excellence in the social sciences and humanities, and enables scholars to address complex issues about individuals and societies, and to further our collective understanding. Serving as the sole principal investigator, Professor Zakzanis received \$98,269 to examine the nature of the replication crisis in clinical and social science using neuropsychological test measures of effort and engagement.

Professor Zakzanis awarded the Brain Injury Association of Peel and Halton (BIAPH)

Professor Zakzanis was awarded the 2020 BIAPH award. BIAPH is a non-profit organization that advocates for the needs and provides information to survivors of acquired brain injuries, their families, and support network. Professor Zakzanis received the award in recognition of his academic research and scholarly presentations in the field of brain injury



Clinical Psychology Students

MASTERS



Sabrina Adamo, MA2

Supervisors: Melanie Cohn & Anthony Ruocco
Research: *Parkinson's Disease, visual hallucinations, mild cognitive impairment*



Maya Amestoy, MA1

Supervisor: Amanda Uliaszek
Research: *borderline personality disorder, stigma, emotion dysregulation*



Cody Cane, MA2

Supervisors: Andy Lee & Anthony Ruocco
Research: *neuroimaging, personality disorders, disinhibition, cognitive control*



Jessica D'Arcey, MA1

Supervisor: Michael Best
Research: *psychosis, delusions, cognitive models, recovery, intervention targets*



Shreya Jagtap, MA2

Supervisor: Michael Best
Research: *delusions, psychosis, cognitive biases*



Talia Leibovitz, MA2

Supervisor: Michael Best
Research: *psychosis, schizophrenia, cognitive behavioural therapy, mechanisms*



Orly Lipsitz, MA1

Supervisor: Anthony Ruocco
Research: *dimensional models, psychopathology, neurocognition, functional disability*



Melanie Mascarenhas, MA1

Supervisors: Konstantine Zakzanis & Zindel Segal
Research: *neuropsychology, traumatic brain injury, mindfulness-based therapies, functional impairment, malingering*



Sarah Mullin, MA1

Supervisors: Jennifer Rabin & Konstantine Zakzanis
Research: *neuromodulation, neuropsychological assessment, deep brain stimulation, alcohol use disorder, substance use disorder*

DOCTORAL



Robert Aidelbaum, PhD2

Supervisor: Michael Best
Research: *social motivation, social cognition, social functioning, schizophrenia*



Michael Carnovale, PhD2

Supervisor: Anthony Ruocco
Research: *psychometrics, diagnostics, data science, psychopathology*



Dean Carcone, PhD5

Supervisors: Anthony Ruocco & Andy Lee
Research: *reward processes, functional magnetic resonance imaging (fMRI)*



Ivy Cho, PhD3

Supervisor: Vina Goghari
Research: *cognitive control, healthy aging, mood disorders*

Clinical Psychology Students (cont'd)



Nicole Cosentino, PhD3

Supervisors: Marc Fournier & Amanda Uliaszek

Research: *interpersonal perception, authenticity, self-coherence, self-knowledge*



Laura Heath, PhD4

Supervisors: Robin Green & Amanda Uliaszek

Research: *traumatic brain injury, neuropsychology, recovery, risk factors, predictors*



Sonja Chu, PhD3

Supervisors: Andy Lee & Vina Goghari

Research: *fMRI, approach-avoidance conflict, anxiety*



Jacob Koudys, PhD3

Supervisors: Anthony Ruocco & Cendri Hutcherson

Research: *suicide, transdiagnostic psychopathology, decision making, impulsivity*



Philip Desormeau, PhD6

Supervisors: Norman Farb & Zindel Segal

Research: *emotion regulation, regulatory beliefs, psychological symptoms*



Daniel Krzyzanowski, PhD2

Supervisors: Gary Remington & Vina Goghari

Research: *schizophrenia, values, subjective well-being, happiness, lifespan development*



Amanda Ferguson, PhD5

Supervisors: Michael Inzlicht & Zindel Segal

Research: *empathy, emotion regulation, effort*



Willem Le Duc, PhD1

Supervisors: Andy Lee & Anthony Ruocco

Research: *approach-avoidance conflict, hippocampus, lesions, memory, decision-making*



Tara Gralnick, PhD6

Supervisor: Amanda Uliaszek

Research: *therapeutic assessment, personality, self-compassion, self-insight, randomized control trial*



Matthew McPhee, PhD5

Supervisors: Christian Hendershot & Michael Bagby

Research: *alcohol use, craving, response inhibition, interoception*



Tahira Gulamani, PhD3

Supervisor: Amanda Uliaszek

Research: *psychopathology, impulsivity, emotion dysregulation, personality*



Alina Patel, PhD2

Supervisors: Lena Quilty & Zindel Segal

Research: *repetitive negative thinking, mindfulness, depression, anxiety*



Kevin Hamdullahpur, PhD4

Supervisor: Amanda Uliaszek

Research: *borderline personality disorder, emotion dysregulation, cannabis use*



Matthew Quitasol, PhD6

Supervisors: Marc Fournier & Amanda Uliaszek

Research: *associations between narcissism and blind spots in self-knowledge*

Clinical Psychology Students (cont'd)



Sylvia Romanowska, PhD1
Supervisor: Michael Best
Research: *psychosis, neurocognition, intervention*



Thulasi Thiruchselvam, PhD4
Supervisors: Lena Quilty & Michael Bagby
Research: *depression, concurrent cannabis use, reward, stress*



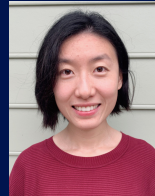
Sarah Saperia, PhD2
Supervisors: Konstantine Zakzanis & George Foussias
Research: *schizophrenia-spectrum disorders; negative symptoms; motivation deficits; treatment targets*



Kathleen Walsh, PhD5
Supervisors: Zindel Segal & Norman Farb
Research: *decentering, perspective taking, well-being, virtual mental health interventions*



Angela Sekely, PhD4
Supervisor: Konstantine Zakzanis
Research: *neuropsychology, psychometrics, traumatic brain injury, brain tumour*



Zoey Zuo, PhD1
Supervisors: Zindel Segal & Norman Farb
Research: *cognitive distortion, rumination, wellbeing, natural language processing, mobile mental health support*



Shauna Solomon-Krakus, PhD4
Supervisors: Catherine Sabiston & Amanda Uliaszek
Research: *eating disorders, body image, self-conscious emotions, perfectionism*



Class of 2021

MASTER OF ARTS

Willem Le Duc

Thesis: *Approach-Avoidance Conflict Processing in Hippocampal Lesion Patients and Aging Populations**

Supervisors: Andy Lee & Anthony Ruocco

**Masters thesis awarded the Certificate of Academic Excellence by the Canadian Psychological Association*

Sylvia Romanowska

Thesis: *Examining the Role of Failure and Success Experiences on Task Persistence and Neurocognition in Schizophrenia*

Supervisor: Michael Best

Zoey Zuo

Thesis: *Neural Dissociation Between Interoceptive and Exteroceptive Attention: A Machine Learning Approach**

Supervisors: Norman Farb & Zindel Segal

**Masters thesis awarded the Certificate of Academic Excellence by the Canadian Psychological Association*

DOCTOR OF PHILOSOPHY

Sonya Dhillon

Thesis: *Perceived and Objective Cognitive Impairment in Depression: the Identification, Investigation, and Measurement of Cognitive Impairment Bias*

Supervisor: Konstantine Zakzanis



Post-graduation: Dr. Sonya Dhillon, Ph.D., C.Psych (supervised practice) will continue and extend her research and clinical track record after completing her Ph.D. with the Department of Psychological Clinical Science. After completing a residency in clinical neuropsychology at Baycrest, Sonya was accepted a leadership role as the lead Psychologist in the Behavioural Health Program at St. Peter's hospital at Hamilton Health Sciences, working primarily as a clinical consultant and neuropsychologist. Moreover, Sonya also accepted an Assistant Clinical Professor role at McMaster University, Department of Psychiatry and Behavioural Neurosciences. She also maintains a clinical practice at the Toronto Psychology Centre. Sonya continues her work in advocacy for underrepresented groups within healthcare, shifting efforts to health equity and access. Sonya also married the love of her life this year!

Recent Successful Doctoral Final Oral Examinations

Courtney Berezuk

Thesis: *Functional Reserve: How Everyday Experience Enhances Resiliency to Functional Decline and a Novel Measure of the Construct*

Supervisors: Konstantine Zakzanis & Sandra E. Black



Post-graduation: Courtney recently welcomed a baby into her family and will be taking a break from research and clinical duties over the next year to spend time with her baby girl. In the meantime, Courtney is in the process of applying to post-doctoral fellowships in clinical neuropsychology starting in September 2022. During the 2-year fellowship, she hopes to obtain specialized training in neurodegenerative and neurosurgical assessment, engage in clinical research, and complete the requirements for ABPP board certification in clinical neuropsychology. Courtney will confer her Ph.D. in Spring 2022.

Lê-Anh Dinh-Williams

Thesis: *Beyond Pleasure: Effects of Depression, Anhedonia, and COVID-19 Stress on Hedonic and Eudaimonic Reward Functioning*

Supervisors: Norman Farb & Zindel Segal



Post-graduation: After completing her pre-doctoral internship at the Royal Ottawa Mental Health Centre, Lê-Anh was awarded the 'Douglas Utting Fellowship for Studies in Depression and Suicide' at the Jewish General Hospital in Montreal, affiliated with McGill University. The fellowship provides funding for postdoctoral research training in the treatment of depression with a particular focus on psychotherapies. Lê-Anh will expand on her dissertation research in depression and complete her fellowship under the supervision of Dr. David Dunkley, Associate Professor in the Department of Psychiatry at McGill University. Lê-Anh will confer her Ph.D. in Spring 2022.

Achala Rodrigo

Thesis: *Cognitive Control Foundations of Interpersonal Functioning*

Supervisor: Anthony Ruocco



Post-graduation: After completing his pre-doctoral residency within the Neuropsychology Track at the London Clinical Psychology Residency Consortium, Rodrigo accepted a fellowship in Clinical Neuropsychology at St. Joseph's Health Care Hamilton. His research continues to broadly examine the relationship between cognitive control and mental health. Rodrigo will confer his Ph.D. in Spring 2022.

Student News

AWARDS & RECOGNITION

Nadia Al-Dajani (PhD, 2020)

Nadia Al-Dajani was the recipient of the 2021 UTSC Psychology Doctoral Dissertation Award, for her thesis, 'An Integrated View of Suicidal Ideation: A Look at Individual Difference Vulnerabilities and Day-to-Day Risk Factors of Suicidal Thoughts.' Nadia was presented the award on October 21, 2021 at the UTSC Psychology Trainee Awards Ceremony, where she also presented on her dissertation research.

Tahira Gulamani (PhD3)

Tahira Gulamani was the recipient 2021 UTSC Teaching Assistant Award, having been a longstanding teaching assistant within UTSC's Department of Psychology. Presented by the Centre for Teaching and Learning, the award recognizes teaching assistants who demonstrate outstanding performance in the support and advancement of student learning.

PRESENTATIONS

Sorted alphabetically by GD-PCS students' last name. Students appear **bolded**.

Ottoy, J., **Adamo, S.**, ..., Black, S. E. (2021, September). *The effect of vascular burden on cognition is mediated by cortical atrophy, amyloid, and glucose metabolism: a multi-centre mixed cohort of severe small vessel disease and Alzheimer's pathology*. Poster presented at the 11th International Conference of the VasCog Society (virtual).

Aidelbaum, R., Hodgins, D. C., & Goghari, V. M. (2021, April). *A Family Study of Executive Function in Gambling Disorder*. Poster presented at the Alberta Gambling Research Institute Conference, Calgary, AB (virtual).

Amestoy, M. E., & Lau, P. (2021, June). *The effects of the COVID-19 pandemic on psychological and sleep-related symptoms in self-defined good and poor sleepers*. Poster presented at the 82nd Annual Canadian Psychological Association (CPA) Conference (virtual).

Amestoy, M. E., & Fiocco, A. J. (2021, June). *The role of emotional eating in the relationship between perceived stress and depressive symptoms in undergraduate students*. Presented at the 82nd Annual Canadian Psychological Association (CPA) Conference (virtual).

Amestoy, M. E., D'Amico, D., Fiocco, A. J. (2021, May). *The moderating role of positive coping strategies in the association between depressive symptoms and emotional eating*. Poster presented at the Canadian Stress Research Summit (virtual).

Amestoy, M. E., & Fiocco, A. J. (2021, August). *Perceived stress and depressive symptoms in undergraduate students: The effect of emotional eating*. Poster presented at the 32nd Annual American Psychological Association (APA) Conference (virtual).

Cane, C., Lee, A. C. H., & Ruocco, A. C. (2021, October). *Neural biomarkers of response inhibition in borderline personality disorder and major depressive disorder and associations with disinhibited personality traits*. Poster presented at the International Society for the Study of Personality Disorders 17th World Congress, Oslo, Norway (virtual).

Student News (cont'd)

Ruocco, A. C., **Carcone, D.**, & Lee, A. C. H. (2021, October). *Cumulative lifetime stress, memory, and hippocampal structure and functioning in depressive disorders and borderline personality disorder*. Invited presentation at the International Society for the Study of Personality Disorders 17th World Congress, Oslo, Norway (virtual).

Cho, I. Y. K. & Goghari, V. M. (2021, May). *A Pilot Study of Structural Networks in Bipolar Disorder*. Presented at the Association for Psychological Science Conference (virtual).

Chu, S., Smith, K., Khan, A., Lee, A. C. H. (2021, September). *Examining the relationships between value-based approach-avoidance conflict decision-making and transdiagnostic measures of disordered eating*. Poster presented at Society for Research in Psychopathology (virtual).

D'Arcey, J. N., Voineskos, A., Kidd, S., Kozloff, N., & Foussias, G. (2021, April) *Using Short Message Service as a Means of Clinical Engagement in Early Psychosis: Pilot Trial Efficacy Outcomes*. Poster presented at the Annual Schizophrenia International Research Society Congress, Florence, Italy (virtual).

Tsuda, M., Herman, Y., & **Desormeau, P. A.** (2021). *Developing and Evaluating Concurrent Disorder Programming on an Early Psychosis Unit*. Presentation delivered at the PPO Education Rounds at the Centre for Addiction and Mental Health (CAMH), Toronto, ON.

Jagtap, S. (2021, July). *Can cognitive remediation for schizophrenia be conducted remotely?* Presented at the Clinical Research Evaluation Cluster Annual Research Day 2021.

Jagtap, S., Zhou, Y., Wang, L., **Romanowska, S.**, **Leibovitz, T.**, Onno, K., & Best, M. (2021,

May). *Examining the efficacy of cognitive behavioral therapy for psychosis delivered through virtual care: a systematic review and meta-analysis*. Poster presented at Canadian Association of Cognitive and Behavioural Therapies 2021 Convention (virtual).

Koudys, J. W. (2021). *A drift diffusion modeling primer and an application to affective impulsivity and decision making across the suicide spectrum*. Presentation delivered at University Health Network Neuropsychology Rounds, Toronto, ON.

Leibovitz, T., Best, M. W., Bowie, C. R. (2021, April). *Effects of schemas, internalized stigma, and symptoms on the experience of social exclusion in psychosis*. Presented at the Annual Schizophrenia International Research Society Congress, Florence, Italy (virtual).

Cancelliere, A., & **Mascarenhas, M.** (2021, December). *Neuropsychological Support for Use of Russell Posttraumatic Amnesia Classification of Traumatic Brain Injury (TBI)*. Poster presented at the National Academy of Neuropsychology (NAN) 41st Annual Conference (virtual).

Patel, A., Bagby, R. M., Harkness, K., & Quilty, L. C. (2021, September). *Exploring Personality and Life Stress in Depression: Links in Transitional Age Youth*. Poster presented to the Society for Research in Psychopathology (virtual).

Patel, A., Allen, T., **Thiruchselvam, T.**, Farzan, F., ..., & Quilty, L. C. (2021, May). *Trajectory of Transdiagnostic Clinical Outcomes Over CBT for Depression*. Poster presented at the Canadian Association of Cognitive and Behavioural Therapies (virtual).

Student News (cont'd)

Quitasol, M. N., Farquhar, J. C., Bagby, R. M., & Quilty, M. A., (2021, July). *Language style matching distinguishes between responders and non-responders of cognitive behavioral therapy for depression*. Poster presented at the 7th Asian Cognitive Behavioral Therapy Conference, Kuala Lumpur, Malaysia (virtual).

Romanowska, S., & Dyer, A. (2021, July). *B.O.O.S.T: Through a service user and peer researcher lens*. Presented at the Clinical Research Evaluation Cluster Annual Research Day 2021.

Romanowska, S. (2021, March). *Examining the Role of Failure and Success Experiences on Task Persistence and Neurocognition in Schizophrenia*. Presented for the UTSC Psychology and Neuroscience Departmental Association Academic Research Panel (virtual).

Romanowska, S., & Best, M. W. (2021, May). *Neurocognitive and functional subgroups in schizophrenia: Implications for Treatment*. Poster presented at the CACBT-ACTCC Conference (virtual).

Romanowska, S., Best, M. W., Bowie, C. R., & Harvey, P. D. (2021, April). *Examining neurocognitive and functional subgroups in schizophrenia*. Poster presented at the Annual Schizophrenia International Research Society Congress (virtual).

Saperia S., ... & Foussias G. (2021, April). *Individual differences in effort-based decision-making: A dimensional investigation in schizophrenia and major depressive disorder*. Presented at the Annual Schizophrenia International Research Society Congress (virtual).

Quilty, L. C., Thiruchselvam, T., Patel, A., Premachandiran, P., ..., & Uher, R. (2021, July). *Inflammatory Markers across Cognitive Behavioural Therapy versus Pharmacotherapy for Depression: A CAN-BIND Report*. Presented at the Asian Cognitive Behavior Conference (virtual).

Rundle, S., Thiruchselvam, T., Dozois, D., Bagby, R. M., Lobo, D., Ravindran, L., & Quilty, L. C. (2021, June). *Pre-Treatment Optimism; A Unique Predictor of Post-Treatment Symptom Severity in Patients with Major Depressive Disorder*. Presented at the CACBT-ACTCC Conference (virtual).

Thiruchselvam, T., Allen, T., Patel, A., Kloiber, S., ..., Quilty, L. C. (2021, May). *Reward Processing in Individual CBT for Depression*. Poster presented at the CACBT -ACTCC Conference (virtual).

Thiruchselvam, T., Patel, A., Daros, A., ..., & Quilty, L.C. (2021, June). *Pre-treatment anxiety sensitivity subscales differentially impact depression trajectory and outcome*. Presented at the International Congress of Cognitive Psychotherapy (virtual).

Walsh, K. M., Segal, Z. V., & Farb, N. A. S. (2021, May). *The Role of Psychological Distancing in Mitigating Distress During the COVID-19 Pandemic*. Presented at the Canadian Stress Research Summit held at Ryerson University (virtual).

Zuo, X., Price, C. J., & Farb, N. A. S. (2021, April). *Decoding moment-to-moment interoceptive attention using fMRI BOLD signals*. Poster presented at the Society for Affective Science Conference (virtual).

Internship

As in other Clinical Psychology Ph.D. programs, the students in our department complete a pre-doctoral clinical internship in the final year of study. The internship marks a turning point for students, who after five or more years of rigorous clinical training take part in a competitive matching process that places them in a year-long, full-time clinical placement, where they gain firsthand professional experience to prepare them for careers as Clinical Psychologists.

Our 2020-2021 and 2021-2022 cohorts successfully matched at competitive internship sites at Canadian Psychology Association-accredited sites across the country. We congratulate our 2020-2021 student cohort for successfully completing their internships and we wish our current 2021-2022 student cohort the best of luck as they finish their placements!

2020-2021

Student	Site
Courtney Berezuk	Department of Clinical Health Psychology - Max Rady College of Medicine, University of Manitoba, <i>Winnipeg, MB</i>
Dean Carcone	Centre for Psychological Services and Research - University of Ottawa, <i>Ottawa, ON</i>
Philip Desormeau	Centre for Addiction and Mental Health - Complex Care and Recovery Service and the Work, Stress and Health Program, <i>Toronto, ON</i>
Lê-Anh Dinh-Williams	Royal Ottawa Mental Health Centre, <i>Ottawa, ON</i>
Sonya Dhillon	Baycrest Clinical Neuropsychology Internship Program, <i>Toronto, ON</i>
Tara Gralnick	Calgary Clinical Psychology Residency Program, <i>Calgary, AB</i>
Matthew Quitasol	Centre for Addiction and Mental Health - Clinical Research Service and the University of Toronto's Health and Wellness Program, <i>Toronto, ON</i>

2021-2022

Student	Site
Amanda Ferguson	The Royal Ottawa Health Care Hospital, <i>Ottawa, ON</i>
Matthew McPhee	Baycrest Clinical Neuropsychology Internship Program, <i>Toronto, ON</i>
Angela Sekely	Baycrest Clinical Neuropsychology Internship Program, <i>Toronto, ON</i>
Shauna Solomon-Krakus	St. Joseph's Healthcare Hamilton - Clinical Psychology Residency Program, <i>Hamilton, ON</i>
Thulasi Thiruchselvam	Centre for Addiction and Mental Health's Work, Stress and Health Program & the University of Toronto's Health and Wellness Program, <i>Toronto, ON</i>
Kathleen Walsh	Nova Scotia Health Authority - Annapolis Valley, <i>Annapolis Valley, NS</i>

2021 Funding Awarded

CORE CLINICAL PSYCHOLOGY FACULTY

Recipient	Sponsor	Funding
Bagby, R. Michael	University of Minnesota Press Test Division Grant (Principal Investigator)	\$15,000 USD
Best, Michael	Project Grant, Canadian Institutes of Health Research (Principal Investigator)	\$150,000
Best, Michael	Research Project Award, Labatt Family Discovery Program (Co-Principal Investigator)	\$39,500
Best, Michael	Ontario Research Fund, Ministry of Colleges and Universities (Principal Investigator)	\$133,500
Goghari, Vina	Emerging COVID-19 Research Gaps & Priorities Grant, Canadian Institutes of Health Research (Co-Investigator)	\$199,121
Ruocco, Anthony	Insight Development Grant, Social Sciences and Humanities Research Council (Principal Investigator)	\$63,750
Segal, Zindel	Project Grant, Canadian Institute for Health Research (Co-Principal Investigator)	\$600,526
Uliaszek, Amanda	Connaught Global Challenge Research Program and Connaught Global Research Impact Program (Co-Principal Investigator)	\$397,540
Total		\$1,598,937

2021 Funding Awarded

STUDENTS

Recipient	Sponsor	Funding
Aidelbaum, Robert	UTSC Clinical Research and Evaluation Cluster	\$7,000
Amestoy, Maya	Bassili Graduate Scholarship	\$3,500
Amestoy, Maya	Social Sciences and Humanities Research Council - Masters	\$17,500
Cane, Cody	Canadian Institutes of Health Research - Masters	\$17,500
Cho, Ivy	UTSC Clinical Research and Evaluation Cluster	\$7,000
Leibovitz, Talia	Canadian Institutes of Health Research - Masters	\$17,500
Lipsitz, Orly	Bassili Graduate Scholarship	\$3,500
Lipsitz, Orly	Social Sciences and Humanities Research Council - Masters	\$17,500
Mullin, Sarah	Canadian Institutes of Health Research - Masters	\$17,500
Patel, Alina	Ontario Graduate Scholarship	\$15,000
Romanowska, Sylvia	Franco Vaccarino UTSC Graduate Scholarship	\$2,500
Romanowska, Sylvia	Ontario Graduate Scholarship	\$15,000
Zuo, Zoey	Mind & Life Francisco J. Varela Research Grant	\$14,269 USD
Zuo, Zoey	Natural Sciences & Engineering Research Council - Doctoral	\$105,000
Total		\$260,269

2021 Publications

Sorted alphabetically by first listed GD-PCS faculty, associate member, or student. Faculty and associate members appear **bolded**. Students appear **bolded and underlined**.

PEER-REVIEWED ARTICLES (55)

Ntiri, E.E., ..., **Adamo, S.**, ..., Goubran, M. (2021). Improved segmentation of the intracranial and ventricular volumes in populations with cerebrovascular lesions and atrophy using 3D CNNs. *Neuroinformatics* 19, 597–618. doi:10.1007/s12021-021-09510-1.

Aidelbaum, R., & Goghari, V. M. (2021). A visual task-based assessment of theory of mind and social perception within bipolar disorder. *The Journal of Nervous and Mental Disease*. Advance online publication. doi:10.1097/NMD.0000000000001408.

Aidelbaum, R., Labelle, A., Choueiry, J., Knott, V. (2021). The acute dose and baseline amplitude-dependent effects of CDP-Choline on deviance detection (MMN) in chronic schizophrenia: A pilot study. *Journal of Experimental and Clinical Psychopharmacology*. Advance online publication. doi:10.1037/pha0000418.

Al-Dajani, N., & Uliaszek, A. A. (2021). The after-effects of momentary suicidal ideation: Emotion intensity changes following suicidal thoughts. *Psychiatry Research*, 302, 114027. doi:10.1016/j.psychres.2021.114027.

Amestoy, M. & Fiocco, A. (2021). Perceived stress and depressive symptoms in undergraduate students: The effect of emotional eating. *Journal of Student Research*, 10(3). doi:10.4761/jsr.v10i3.1281.

Millet, G., D'Amico, D., **Amestoy, M. E.**, Gryspeerd, C., & Fiocco, A. J. (2021). Do group-based mindfulness meditation programs enhance executive functioning? A systematic review and meta-analysis of the evidence. *Consciousness and Cognition*, 95, 103195. doi:10.1016/j.concog.2021.103195.

Drvaric, L., & **Bagby, R. M.** (2021). The association of pathological and “normal-range” personality traits with psychotic-like experiences in a general population sample. *Personality Disorders: Theory, Research, and Treatment*, 12(2), 93-102. doi:10.1037/per0000475.

Taylor, G.J., & **Bagby, R. M.** (2021). Examining proposed changes to the conceptualization of the alexithymia construct: The way forward tilts to the past. *Psychotherapy and Psychosomatics*, 90, 145-155. doi:10.1159/000511988.

Bagby, R. M., Sanches, M., **Carnovale, M.**, & Taylor, G. J. (2021). An evaluation of alexithymia subtypes using latent profile analysis. *Psychiatry Research*, 299, 113840. doi:10.1016/j.psychres.2021.

Shamblaw A. L., Rumas R., **Best M. W.** (2021). Coping during the COVID-19 pandemic: Relations with mental health and quality of life. *Canadian Psychology*, 62(1), 92-100. doi:10.1037/cap0000263.

Woolridge S., Harrison G., **Best M. W.**, Bowie C. R. (2021). Attention bias modification in depression: A randomized trial using a novel, reward-based, eye-tracking approach. *Journal of Behavior Therapy and Experimental Psychiatry*, 71, 101621. doi:10.1016/j.jbtep.2020.101621.

Zahid A., **Best M. W.** (2021). Stigma towards individuals with schizophrenia: Examining the effects of negative symptoms and diagnosis awareness on preference for social distance. *Psychiatry Research*, 297, 113724. doi:10.1016/j.psychres.2021.113724.

Wrege, J. S., **Carcone, D.**, **Lee, A. C. H.**, **Cane, C.**, Lang, U. E., Borgwardt, S., Walter, M., & **Ruocco, A. C.** (2021). Attentional salience and the neural substrates of response inhibition in borderline personality disorder. *Psychological Medicine*, 1-9. Advance online publication. doi:10.1017/S0033291721000118.

Carnovale, M., Taylor, G. J., Parker, J. D. A., Sanches, M., & **Bagby, R. M.** (2021). A bifactor analysis of the 20-item Toronto Alexithymia Scale: Further support for a general alexithymia factor. *Psychological Assessment*, 33(7), 619–628. doi:10.1037/pas0001000.

Chu, S., Margerison, M., Thavabalasingam, S., O'Neil, E. B., Ito, R., **Lee, A. C. H.** (2021). Perirhinal cortex is involved in the resolution of learned approach-avoidance conflict associated with discrete objects. *Cerebral Cortex*. 31(5), 2701-2719. doi:10.1093/cercor/bhaa384.

Burton, M. S., **Cooper, A. A.**, Mello, P. G., Feeny, N. C., Zoellner, L. A. (2021). Latent profiles of comorbid depression as predictors of PTSD treatment outcome. *Behavior Therapy*, 52(4), 970-981. doi:10.1016/j.beth.2020.12.005.

Kline, A. C., **Cooper, A. A.**, Rytwinski, N., & Feeny, N. C. (2021). The effects of concurrent depression on PTSD outcomes in trauma-focused psychotherapy: A meta-analysis of randomized controlled trials. *Behavior Therapy*, 52(1), 250-266. doi:10.1016/j.beth.2020.04.015.

Murphy, S. T., **Cooper, A. A.**, Hollars, S. N., & Strunk, D. R. (2021). Who benefits from a cognitive vs. behavioral approach to treating depression? A pilot study of prescriptive predictors. *Behavior Therapy*, 52(6), 1433-1448. doi:10.1016/j.beth.2021.03.012.

Dhillon, S., **Sekely, A.**, Gujral, P., Joseph, S., & **Zakzanis, K. K.** (2021). Linguistic interpretation of acute injury characteristics that define mild traumatic brain injury: An exploratory study of native and non-native English speakers. *Psychological Injury and the Law*, 14, 153-160. doi:10.1007/s12207-021-09416-y.

Ferguson, A. M., Cameron, C.D., & **Inzlicht, M.** (2021). When does empathy feel good? *Current Opinion in Behavioral Science*, 39, 125-129. doi:10.1016/j.cobeha.2021.03.011.

Fournier, M. A., Dong, M., **Quitasol, M. N.**, Weststrate, N. M., & Di Domenico, S. I. (2021). Components and correlates of personality coherence in action, agency, and authorship. *European Journal of Personality*. Advance online publication. doi:10.1177/08902070211034954.

2021 Publications (cont'd)

Gardhouse, K., Carcone, D., & Ruocco, A. C. (2021). Stressed, sick, and sad: Neuroendocrine pathways between subjective lifetime stress and depression. *Brain, Behavior, and Immunity – Health, 14*, 100249. doi:10.1016/j.bbih.2021.100249.

Lawlor-Savage, L., Kusi, M., Clark, C.M., **Goghari, V.** (2021). No evidence for an effect of a working memory training program on white matter microstructure. *Intelligence, 86*, 101541. doi:10.1016/J.INTELL.2021.101541.

Grimes, K. M., Foussias, G., Remington, G., Kalahani-Bargis, K., Zakzanis, K. K. (2021). Stability of verbal fluency in outpatients with schizophrenia. *Psychiatry Research, 295*, 113528. doi:10.1016/j.psychres.2020.113528.

Gulamani, T., Rodrigo, A. H., & Uliaszek, A. A., & Ruocco, A. C. (2021). Facial emotion perception in families affected with borderline personality disorder. *Journal of Personality Disorders, 35*(Suppl. A), 132–148. doi:10.1521/pedi.2021.35.514.

Rumas, R., Shamblaw, A.L., **Jagtap S., Best M. W.** (2021) Predictors and consequences of loneliness during the COVID-19 pandemic. *Psychiatry Research, 300*, 113934. doi:10.1016/j.psychres.2021.113934.

Koudys, J. W. & Ruocco, A.C. (2021). Executive functions in adults with borderline personality disorder and first-degree relatives. *The World Journal of Biological Psychiatry*. Advance online publication. doi:10.1080/15622975.2021.2012396.

Krzyzanowski, D., Agid, O., Goghari, V., & Remington, G. (2021). Cognitive discrepancies, motivation and subjective well-being in people with schizophrenia. *Schizophrenia Research: Cognition, 26*, 100205. doi:10.1016/j.scog.2021.100205.

Leibovitz T., Shamblaw A. L., Rumas R., Best M. W. (2021). COVID-19 conspiracy beliefs: Relations with anxiety, quality of life, and schemas. *Personality and Individual Differences, 175*, 110704s. doi:10.1016/j.paid.2021.110704.

Ng, J., Lui, L. M., Rosenblat, J. D., Teopiz, K. M., **Lipsitz, O.**, Cha, D.S.,... & McIntyre, R. S. (2021). Ketamine-induced urological toxicity: potential mechanisms and translation for adults with mood disorders receiving ketamine treatment. *Psychopharmacology, 1-10*. doi:10.1007/s00213-021-05767-1.

Lipsitz, O., Di Vincenzo, ..., Rosenblat, J. D. (2021). Safety, tolerability, and real-world effectiveness of intravenous ketamine in older adults with treatment-resistant depression: A case series. *American Journal of Geriatric Psychiatry, 29*(9), 899-913. doi:10.1016/j.jagp.2020.12.032.

Lui, L. M., Lee, Y., **Lipsitz, O.**, Rodrigues, N. B., Gill, H., Ma, J.,... & McIntyre, R. S. (2021). The influence of prescriber and patient gender on the prescription of benzodiazepines: Results from the Florida Medicaid Dataset. *CNS spectrums, 1-5*. doi:10.1017/S1092852921000055.

Rashidian, H., Subramaniapillai, M., Park, C., **Lipsitz, O.**, Zuckerman, H., Teopiz, K.,... & Mansur, R. B. (2021). Insulin resistance is associated with deficits in hedonic, self-reported cognitive, and psychosocial functional response to antidepressant treatment in individuals with major depressive disorder. *Journal of Affective Disorders, 282*, 448-453. doi:10.1016/j.jad.2020.12.074.

Rodrigues, N. B., McIntyre, R. S., **Lipsitz, O.**, Lee, Y., Cha, D. S., Shekotikhina, M., ..., & Rosenblat, J. D. (2021). A simplified 6-Item clinician administered dissociative symptom scale (CADSS-6) for monitoring dissociative effects of sub-anesthetic ketamine infusions. *Journal of Affective Disorders, 282*, 160-164. doi:10.1016/j.jad.2020.12.119.

Gill, H., Gill, B., Rodrigues, N. B., **Lipsitz, O.**, Rosenblat, J. D., El-Halabi, S., Nasri, F., Mansur, R. B., Lee, Y., McIntyre, R. S. (2021). The effects of ketamine on cognition in treatment-resistant depression: A systematic review and priority avenues for future research. *Neuroscience & Biobehavioral Reviews, 120*, 78-85. doi:10.1016/j.neubiorev.2020.11.020.

Best, L. M., Wardell, J. D., Tyndale, R. F., **McPhee, M. D.**, Le Foll, B., Kish, S. J., ... & **Hendershot, C. S.** (2021). Association of the fatty acid amide hydrolase C385A polymorphism with alcohol use severity and coping motives in heavy-drinking youth. *Alcoholism: Clinical and Experimental Research, 45*(3), 507-517. doi:10.1111/acer.14552.

Chukwueke, C. C., Nona, C. N., **McPhee, M. D.**, Mansouri, E., Rubin-Kahana, D. S., Martinez, D., ... & Le Foll, B. (2021). Exploring regulation and function of dopamine D3 receptors in alcohol use disorder. A PET [11C]-(+)-PHNO study. *Neuropsychopharmacology, 46*, 2112–2120. doi:10.1038/s41386-021-01095-2.

Tao, C. S., Ramakrishnan, N., **McPhee, M.**, Lewandowska, O. P., & **Erb, S.** (2021). Anxiety mediates the relationship between childhood adversity and perceived current life stress in a diverse sample of emerging adults. *International Journal of Adolescence and Youth, 26*(1), 256-265. doi:10.1080/02673843.2021.1910050.

Kiiza, P., **Mullin, S. I.**, Teo, K., ..., & Adhikari, N. K. (2021). Establishing healthcare worker performance and safety in providing critical care for patients in a simulated Ebola treatment unit: Non-randomized pilot study. *Viruses, 13*(11), 2205. doi:10.3390/v13112205.

Yau, K., ..., **Mullin, S. I.**, ..., Hladunewich, M. A. (2021). Evaluation of the SARS-COV-2 antibody response to the BNT162B2 vaccine in patients undergoing hemodialysis. *JAMA Network Open, 4*(9), e2123622. doi:10.1001/jamanetworkopen.2021.23622.

Quilty, L. C., Agic, B. ..., **Patel, A.**, Persaud, R., & Buckley, L. (2021). Benefits of digital health resources for substance use concerns in women: A scoping review. *JMIR Mental Health, 8*(6), e25952. doi:10.2196/25952.

Papastergiou, J., **Quilty, L. C.**, Li, W., **Thiruchselvam, T.**, Jain, E., Gove, P., Mandlsohn, L., van den Bemt, B., & Pojskic, N. (2021). Pharmacogenomics guided versus standard antidepressant treatment in a community pharmacy setting: A randomized controlled trial. *Clinical and translational science, 14*(4), 1359–1368. doi:10.1111/cts.12986.

Quilty, L. C., Bagby, R. M., Krueger, R. F., & Pollock, B. G. (2021). Validation of DSM-5 clinician-rated measures of personality pathology. *Psychological Assessment, 33*(1), 84-89. doi:10.1037/pas0000960.

Daros, A. R., & **Ruocco, A. C.** (2021). Which emotion regulation strategies are most associated with trait emotion dysregulation? A multi-method transdiagnostic approach. *Journal of Psychopathology and Behavioral Assessment, 43*, 478–490. doi:10.1007/s10862-020-09864-x.

2021 Publications (cont'd)

Daros, A. R., Pereira, B. J., Khan, D., **Ruocco, A. C.**, **Quilty, L. C.**, & Wardell, J. D. (2021). Daily associations between cannabis use and alcohol use in young adults: The moderating role of self-report and behavioral measures of impulsivity. *Addiction Research & Theory*. Advance online publication. doi:10.1080/16066359.2021.1939314.

St-Amour, S., Cailhol, L., **Ruocco, A. C.**, & Bernard, P. (2021). Could physical exercise be an effective treatment for adults with borderline personality disorder? *Psychiatry Research*, 295, 113625. doi:10.1016/j.psychres.2020.113625.

Traynor, J. M., Wrege, J., Walter, M., & **Ruocco, A. C.** (2021). Dimensional personality impairment is associated with disruptions in intrinsic intralimbic functional connectivity. *Psychological Medicine*. Advance online publication. doi:10.1017/S0033291721002865.

Wrege, J., **Ruocco, A. C.**, **Carcone, D.**, Lang, U. E., **Lee, A. C. H.**, & Walter, M. (2021). Facial emotion perception in borderline personality disorder: Differential neural activation to ambiguous and threatening expressions and links to impairments in self and interpersonal functioning. *Journal of Affective Disorders*, 284, 126-135. doi:10.1016/j.jad.2021.01.042.

Ruocco, A. C., **Rodrigo, A. H.**, Lam, J., Ledochowski, J., Chang, J., Wright, L., & McMain, S. F. (2021). Neurophysiological biomarkers of response inhibition and the familial risk for borderline personality disorder. *Progress in Neuro-Psychopharmacology and Biological Psychiatry*, 111, 110115. doi: 10.1016/j.pnpbp.2020.110115.

Breedvelt, J. Warren, F. **Segal, Z.** Kuyken, W & Bockting, C. (2021). Continuation of antidepressants vs sequential psychological interventions to prevent relapse in depression: An individual participant data meta-analysis. *JAMA Psychiatry*, 78, 868-875. doi:10.1001/jamapsychiatry.2021.0823.

Lucibello, K. M., Nesbitt, A.E., **Solomon-Krakus, S.**, & Sabiston, C. M. (2021). Internalized weight stigma in the relationship between weight perception and negative body-related self-conscious emotions. *Body Image*, 37(2), 84-88. doi:10.1016/j.bodyim.2021.01.010.

Uliaszek, A. A., **Fournier, M. A.**, Southward, M., **Al-Dajani, N.**, & **Quitasol, M.** (2021). Bridging development and disturbance: A translational approach to the study of identity. *Personality Disorders: Theory, Research, and Treatment*. Advance online publication. doi:10.1037/per0000514.

Uliaszek, A. A., **Rashid, T.**, & Zarowsky, Z. (2021). The role of signature strengths in treatment outcome: Initial results from a large and diverse university sample. *Journal of Contemporary Psychotherapy*. Advance online publication. doi:10.1007/s10879-021-09523-6.

Williams, G. & **Uliaszek, A. A.** (2021). Measuring negative emotion differentiation via coded descriptions of emotional experience. *Assessment*. Advance online publication. doi:10.1177/10731911211003949.

Jeffay, E., Binder, L. M., & **Zakzanis, K. K.** (2021). Marked intraindividual cognitive variability in a sample of healthy graduate students. *Psychological Injury and the Law*, 14, 171-183. doi:10.1007/s12207-021-09417-x.

BOOK CHAPTERS (3)

Best M. W., **Romanowska, S.** (2021). Schizophrenia-Spectrum and Other Psychotic Disorders. In D Dozois (Ed.) *Abnormal Psychology: Perspectives (7th Edition)*: Pearson.

Bowie C. R, **Best M. W.**, Tran T, Boyd J. (2021). Cognitive remediation for depression. In J. Choi (Ed.) & S. M. McClintock (Ed.) *Handbook of Neurocognitive Function in Depression: Scientific Foundations and Clinical Practice*. New York: Guilford Press.

Ferguson, A., **Dinh-Williams, L.**, & **Segal Z.** (2021). Mindfulness Based Cognitive Therapy. In A. Wenzel (ed.) *Handbook of Cognitive and Behavioral Therapy (Vol.1)*. American Psychological Association Press, 595-615.



Psychological Clinical Science
UNIVERSITY OF TORONTO
SCARBOROUGH

