



UNIVERSITY OF  
**TORONTO**

# Annual Report

Campus Community Police Services

University of Toronto at Mississauga

University of Toronto St. George Campus

University of Toronto at Scarborough

**2012**

Table of Contents

Introduction ..... 3

Organizational Overview..... 3

Operations ..... 4

    Statistical Overview .....5

    In Summary ..... **Error! Bookmark not defined.**

    Complaints .....6

Training and Recruitment ..... 6

Community Policing Activity ..... 6

Support Services ..... 6

University Services ..... **Error! Bookmark not defined.**

Appendix A Detailed Training List ..... 7

This will automatically update the page numbers for you. Highlight it, right mouse and select Update table

## **Introduction**

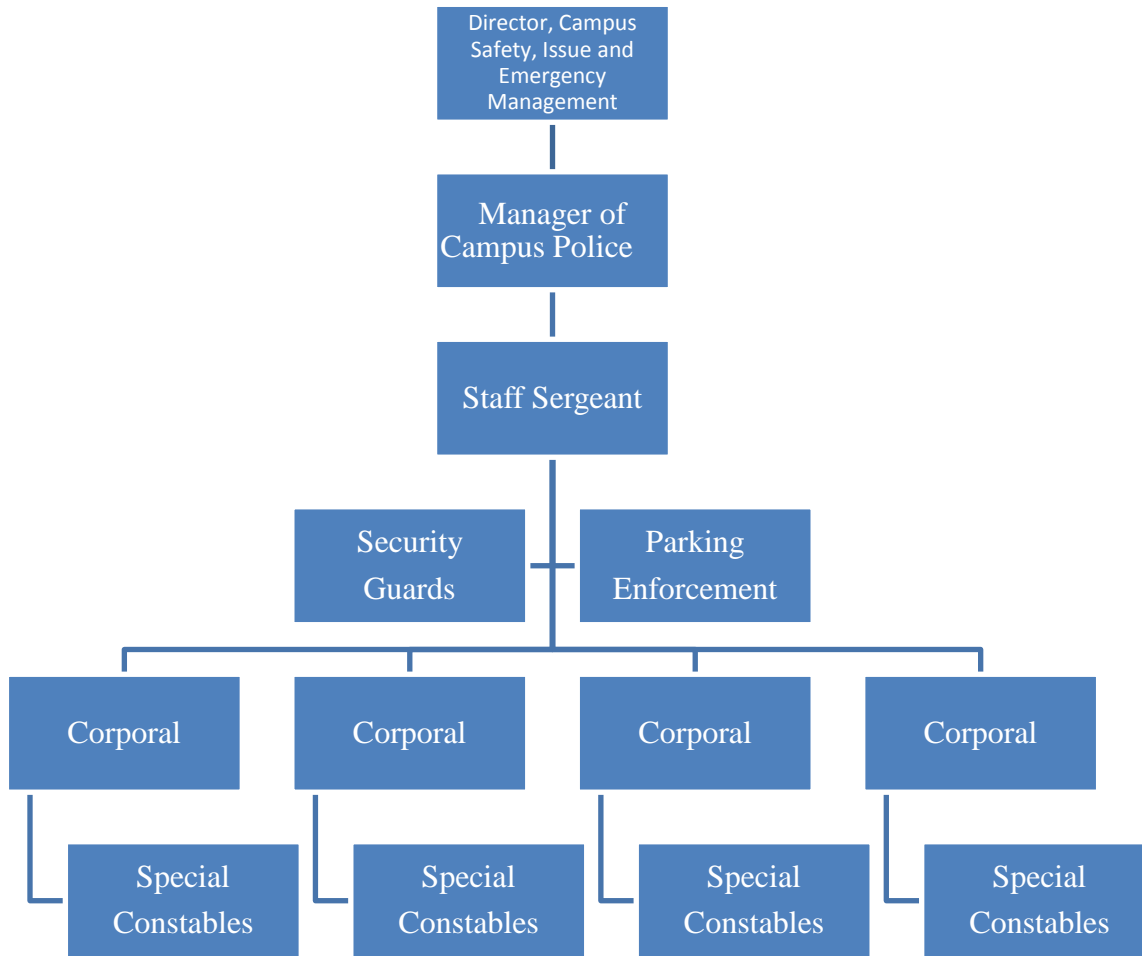
### **Scarborough**

The University of Toronto Scarborough Campus Community Police provides effective support to our Community, ensuring that prescribed Service standards while ensuring the administration, promotion and support of professionalism are upheld. These standards include the practices, conduct, appearance, ethics and integrity of its members, with a goal to strengthen public confidence and co-operation within the community.

### **Organizational Overview**

The Manager of UTSC Campus Community Police Services reports to the Director of Campus Safety, Issue and Emergency Management. The Manager and the Staff Sergeant of the UTSC Special Constable Services are responsible for the management and general supervision of all Corporals and Special Constables, while the Corporals are responsible for the supervision of the Special Constables on duty. Managers are generally on duty from 9:00 a.m. – 6:00 p.m. Monday to Friday and on call and available at other times. At all times there is a Corporal or Acting Corporal on duty and designated as shift supervisor, and who is responsible for supervising between 1 and 4 officers.

The U.T.S.C. Campus Community Police is comprised of one manager, one staff sergeant, four corporals, and 8 special constables. This group is complemented by 5 Building Patrollers, 3 Parking Enforcement Officers, and an administrative assistant. Dispatching and telephone enquiry services are provided by the communications section situated at the St. George Campus Police Office.



## Operations

The University of Toronto Scarborough Campus Special Constable Service continues to dedicate itself to the core values of Community Based Policing. In fulfilling this purpose, the University Special Constables work in partnership with the community in developing programs and conducting activities to promote safety and security on campus.

## Statistical Overview

<b>Incident Types</b>	<b>2010</b>	<b>2011</b>	<b>2012</b>	<b>12 v 11</b>
Break and enter	10	4	14	10
Robbery	0	1	1	0
Theft Over \$5000	4	0	0	0
Theft Under \$5000	63	78	77	-1
Theft Bicycles	3	7	16	9
Possess stolen property	1	0	0	0
Disturb Peace	2	1	0	-1
Indecent Acts	2	0	2	2
Mischief/Damage	19	23	13	-10
Other Offences	1	1	10	9
Sexual Assaults	1	1	2	1
Assault	5	4	4	0
Impaired Driving	1	0	1	1
Criminal Harassment	1	1	1	0
Threatening	1	0	0	0
Homophobic/Hate Crimes	2	1	0	-1
Homicide	0	0	0	0
<b>Crime Occurrences</b>	<b>116</b>	<b>122</b>	<b>141</b>	<b>19</b>

<b>Other Activity</b>	<b>2010</b>	<b>2011</b>	<b>2012</b>	<b>12 v 11</b>
Arrest Warrants	0	0	0	0
Alarms	358	508	356	-152
Fire Alarms	39	25	43	18
Assist other police	1	2	5	3
Assist Community Member	0	0	380	380
Disturbances	2	0	4	4
Demonstrations/Protests	4	0	0	0
Inv. Suspicious Persons	3	17	75	58
Inv. Suspicious Circumstances	12	7	93	86
Trespasser Charged	9	0	15	15
Trespasser Cautioned	8	13	6	-7
Medical Assistance	73	91	145	54
Insecure Premises	2	0	16	16
Motor Vehicle Collision	4	14	16	2
Mental Health Act	5	12	11	-1
Suicide/Attempt Suicide	0	0	0	0
Sudden Death	0	0	0	0
Fires	2	7	6	-1

This is an embedded object. Double click on it to add data to the fields. The math should be done automatically.

The statistics included in these tables do not reflect the total workload of the Campus Special Constables. Proactive policing still accounts for the majority of time spent by the officers during their tour of duty. These statistics also do not reflect the informal and impromptu contacts the officers have with members of the university community which also contribute to an enhanced sense of personal safety.

## **Complaints**

There were no complaints regarding the actions of the University of Toronto Scarborough Campus Police Special Constables in 2012.

## **Training and Recruitment**

Our training is designed to be proactive, providing our personnel with the skills necessary to support the mission of the University. Some training is mandated by changes in legislation, Provincial Standards, and directives from the Toronto Police Services Board. Other training is provided to support the officers in being sensitive to the diverse needs of the university environment.

In 2012 the Toronto Police Service's training college reviewed the training provided to special constables at the University's two Toronto campuses. The training provided to our officers was found to meet and/or exceed expectations for training provided to special constables.

The tables listed in Appendix A outline the training provided in 2012 to the Scarborough Campus Special Constables.

## **Community Policing Activity**

### **Scarborough**

Community Based Policing is a reactive, proactive, and coactive approach to policing that redefines the roles and relationships between the police and the community. It requires shared ownership, decision making and accountability, as well as a sustained commitment from both the police and the community.

The following campus safety programs are operated, organized by, financially supported by, and/or participated in by the UTSC Campus Community Police:

- General Police Patrol**
- UTSC Building**
- Lone Worker**
- Crime Stoppers**
- Positive Space Committee**
- Emergency Telephone Monitoring and Response**
- Emergency Medical Response**
- Car-Booster Battery**
- Student Leader Orientation Events**
- Residence Advisor Training**
- Orientation Presentations**

**Alcohol Awareness**  
**Build.Act.Change. – Preventing Violence Together**  
**Montreal Massacre Remembrance**  
**Emergency Locating Service**  
**Safety Audits**  
**Personal Safety Presentations**  
**Lap Top Anti-Theft Program**

## Appendix A Detailed Training List

### Training

#### *Mandatory Training*

<b>Subject Matter</b>	<b>Delivered By</b>	<b>Duration</b>	<b>Number Receiving Training</b>
Annual Use of Force	U.T.S.C. Campus Community Police	8 Hours	14
Annual Use of Force	U.T.S.C. Campus Community Police	8 Hours	13
First Aid, CPR	St. Johns Ambulance and Canadian Police Knowledge Network	Online Course with classroom instruction	2*
Diversity – Accessibility for Ontarians with Disabilities	University of Toronto	2 Hours	12

\* All officers have current first aid/cpr certification.

### ***Additional Training***

<b>Subject Matter</b>	<b>Delivered By</b>	<b>Duration</b>	<b>Number Receiving Training</b>
A Manager's Guide to Culture, Conflict and Inclusion	University of Toronto Organizational Development and Learning Centre	8 Hours	5
Advanced Patrol Training <ul style="list-style-type: none"> <li>• Arrest</li> <li>• Criminal offences</li> <li>• Drugs</li> <li>• Investigative Detention</li> <li>• Drinking and Driving</li> <li>• Domestic violence</li> <li>• Provincial Offences</li> <li>• Search and Seizure without warrant</li> </ul>	Canadian Police Knowledge Network	11 Hours	11
Advanced Patrol Training for Special Constables	E. Judd and Associates	40 Hours	3
Basic Principles of Supervision	University of Toronto Organizational Development and Learning Centre	8 Hours	3
Emergency Management	Toronto Police College	8 Hours	1
Emergency Management 225	Ontario Office of Emergency Management	16 Hours	1
Exercise Program – an Introduction (EM125)	Ontario Office of Emergency Management	5 Hours	1
Harassment and Violence in the	University of Toronto Occupational Health	5 Hours	1



Workplace	and Safety		
Investigative Interviewing	Investigative Solutions Network	32 Hours	5
Protective Services Coach Officers and Supervisors Course	Ed Judd and Associates	32 Hours	3
Scientific Content Analysis Course	Investigative Solutions Network	24 Hours	1
Social Media Fundamentals for Law Enforcement	Peel Regional Police Service	14 Hours	1
Threat Assessment and Management Training	Investigative Solutions Network	16 Hours	6
Domestic Violence and Sexual Assault	Toronto Police College	8 Hours	5
Harassment and Violence in the Workplace	University of Toronto	1.5 Hours	1
Abuse and Harassment in the Workplace	Ontario Association of Chiefs of Police	8 Hours	1