



CrossMark
click for updates

Research

Cite this article: Bloom DD, Lovejoy NR. 2014
The evolutionary origins of diadromy inferred
from a time-calibrated phylogeny for
Clupeiformes (herring and allies). *Proc. R. Soc.
B* **281**: 20132081.
<http://dx.doi.org/10.1098/rspb.2013.2081>

Received: 11 August 2013

Accepted: 11 December 2013

Subject Areas:

taxonomy and systematics, evolution, ecology

Keywords:

diadromy, anadromy, catadromy, habitat
transitions, life history, migration

Author for correspondence:

Devin D. Bloom

e-mail: devin.bloom@gmail.com

[†]Present address: Department of Ecology and
Evolutionary Biology, University of Kansas,
1501 Crestline Drive, Suite 140, Lawrence,
KS 66045-2811, USA.

Electronic supplementary material is available
at <http://dx.doi.org/10.1098/rspb.2013.2081> or
via <http://rspb.royalsocietypublishing.org>.

The evolutionary origins of diadromy inferred from a time-calibrated phylogeny for Clupeiformes (herring and allies)

Devin D. Bloom^{1,2,†} and Nathan R. Lovejoy^{1,2}

¹Department of Biological Sciences, University of Toronto Scarborough, Toronto, Ontario, Canada M1C 1A4

²Department of Ecology and Evolutionary Biology, University of Toronto, Toronto, Canada

One of the most remarkable types of migration found in animals is diadromy, a life-history behaviour in which individuals move between oceans and freshwater habitats for feeding and reproduction. Diadromous fishes include iconic species such as salmon, eels and shad, and have long fascinated biologists because they undergo extraordinary physiological and behavioural modifications to survive in very different habitats. However, the evolutionary origins of diadromy remain poorly understood. Here, we examine the widely accepted productivity hypothesis, which states that differences in productivity between marine and freshwater biomes determine the origins of the different modes of diadromy. Specifically, the productivity hypothesis predicts that anadromous lineages should evolve in temperate areas from freshwater ancestors and catadromous lineages should evolve in tropical areas from marine ancestors. To test this, we generated a time-calibrated phylogeny for Clupeiformes (herrings, anchovies, sardines and allies), an ecologically and economically important group that includes high diversity of diadromous species. Our results do not support the productivity hypothesis. Instead we find that the different modes of diadromy do not have predictable ancestry based on latitude, and that predation, competition and geological history may be at least as important as productivity in determining the origins of diadromy.

1. Introduction

Diadromy is a remarkable life-history behaviour in which individuals migrate between oceans and freshwater rivers during a predictable phase of their life cycle, typically for feeding and reproduction [1]. Diadromous fishes have been a long-standing fascination of biologists [1–4], both because of the impressive physiological and behavioural adaptations necessary for survival in different habitats, and because diadromy has significant implications for the ecology, evolution and biogeography of fishes [5–8]. For instance, diadromy can impact genetic diversity and amounts of gene flow [9], alter life-history traits [10,11], and have cascading effects between marine, freshwater and terrestrial food webs [12]. Moreover, many of the approximately 250 diadromous fish species found nearly worldwide [7,13,14] are heavily studied iconic food and sport fishes (e.g. salmon, sturgeon, shad, eel).

There are several outstanding questions concerning diadromy: (1) What factors promote these remarkable migrations that require energetically costly physiological and osmoregulatory changes to deal with salinity differences between environments? (2) Under what conditions do the different types of diadromy (see below) evolve? Why would some species migrate to oceans while other species migrate to freshwater habitats to reproduce or feed? (3) Does diadromy facilitate the evolution of long-term lineage transitions between marine and freshwater habitats? (4) Lastly, what are the macroevolutionary and biogeographic implications of diadromy? Here, we test hypotheses regarding the evolutionary origins of diadromous lineages (questions 1 and 2), and address the macroevolutionary patterns and implications of this life-history behaviour (questions 3 and 4).

Three types of diadromy have been described: catadromy, anadromy and amphidromy [1]. Catadromous fishes are born in marine biomes and migrate to freshwater, where they spend most of their lives feeding and growing before returning to the ocean to reproduce. Anadromous fishes do the opposite—they are born in freshwater and migrate to the ocean, where they feed and grow, before migrating to freshwater to reproduce. Amphidromous species migrate between marine and freshwaters at a particular life-cycle stage (often as juveniles), but not for the purpose of spawning. More detailed descriptions and definitions of diadromy have been reviewed elsewhere [1,14–17].

The evolutionary origins of diadromy are the subject of considerable theoretical discussion [1,14,18–23]. In an important contribution, Gross [22] and Gross *et al.* [23] proposed that differences in ecological productivity between marine and freshwater biomes determine the origins of the different modes of diadromy (herein referred to as the ‘productivity hypothesis’). Assuming the accuracy of Gross’s analyses of productivity data, oceans have higher productivity than freshwaters in temperate regions, and freshwaters have higher productivity than oceans in tropical regions. In turn, higher latitudes have more anadromous species and lower latitudes have more catadromous species (figure 1). This apparent geographical relationship between productivity and mode of diadromy provides some evidence that temperate anadromous fishes are derived from freshwater ancestors that began migrating to oceans to exploit the higher productivity, while tropical catadromous fishes are derived from marine ancestors that began migrating to rivers to exploit these higher productivity habitats [22,23]. Gross [22] further proposed that diadromy represents an intermediate condition between the evolution of fully freshwater to fully marine species (or vice versa). Gross’s productivity model therefore makes the phylogenetic prediction (figure 2) that anadromous species have evolved from a freshwater ancestor, while catadromous species evolved from a marine ancestor.

An alternative hypothesis for the origin of diadromy is the ‘safe-site hypothesis’, specifically proposed to explain the evolution of anadromy [25]. The safe-site hypothesis posits that freshwater habitats offer the eggs and larvae of marine fishes a sanctuary from marine predators. Thus, anadromy would be driven by the adaptive advantage offered by migration to freshwater habitats for reproduction. The safe-site hypothesis predicts that anadromous species evolved from a marine ancestor, and that freshwater species eventually evolve from anadromous lineages (figure 2).

Few studies have attempted to test hypotheses for the evolutionary origins of diadromy using a phylogenetic framework (but see [25,26]), and Gross’s productivity hypothesis is based on species data that have not been examined in a phylogenetic framework. Here, we conduct a phylogenetic investigation of the evolution of diadromy in Clupeiformes, which includes some of the most important food fishes of all time (herring, sardines, anchovies and their allies). While most major fish clades are restricted to either marine or freshwater habitats [13,27], clupeiforms include marine, freshwater and diadromous species. In fact, Clupeidae alone has more diadromous species (approx. 30) than any other family of fishes except Gobiidae and Salmonidae, and the proportion of diadromous clupeids is about 10 times higher than in all other fishes [28]. Moreover, clupeiforms include both anadromous and catadromous species, making this group a superb

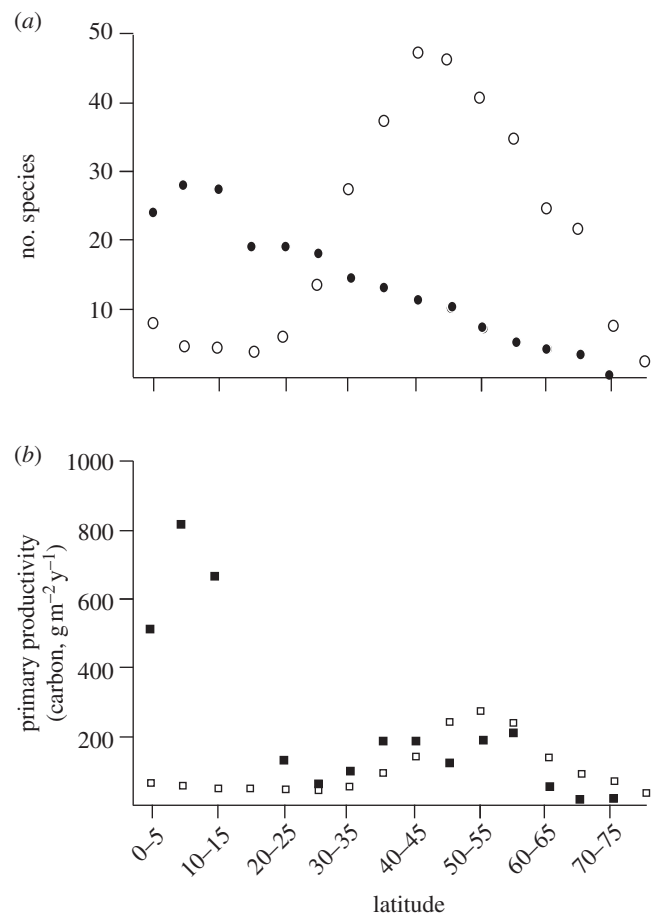


Figure 1. Evidence for the productivity hypothesis for the evolution of diadromy, adapted from Gross *et al.* [23]. (a) The number of all known anadromous (open circles) and catadromous (filled circles) fish species found across 5° latitudinal increments averaged from both Northern and Southern hemispheres, based on McDowall [18]. Diadromy occurs across the major craniate groups, from lampreys to percomorphs. (b) Annual primary productivity (measured in grams of carbon fixed per square metre per year) of aquatic biomes across different latitudes. Freshwater data (filled squares) averaged from 135 different water bodies; marine data (open squares) from Bunt [24]. See [23] for details on how species numbers and primary productivity were calculated.

model system for testing hypotheses on the evolution of diadromy and evolutionary transitions between aquatic biomes.

Using a time-calibrated phylogeny of clupeiforms, we reconstruct the evolution of marine, freshwater and diadromous lineages to explicitly test the productivity and the safe-site hypotheses for the origins of diadromous fishes. We also consider the role of diadromy in transitions between marine and continental freshwater biomes, and test whether diadromy facilitates evolutionary transitions between habitat types.

2. Material and methods

(a) Taxon sampling and molecular data

We assembled a data matrix consisting of four genes (*rag1*, *rag2*, *cytb*, *16 s*) that included the broadest taxon sampling possible for clupeiforms by combining data from previously published studies [29–35] and newly generated sequence data for available taxa (see electronic supplementary material, table S1). The dataset includes 153 species from 64 of the 84 currently recognized genera and all major lineages of Clupeiformes.

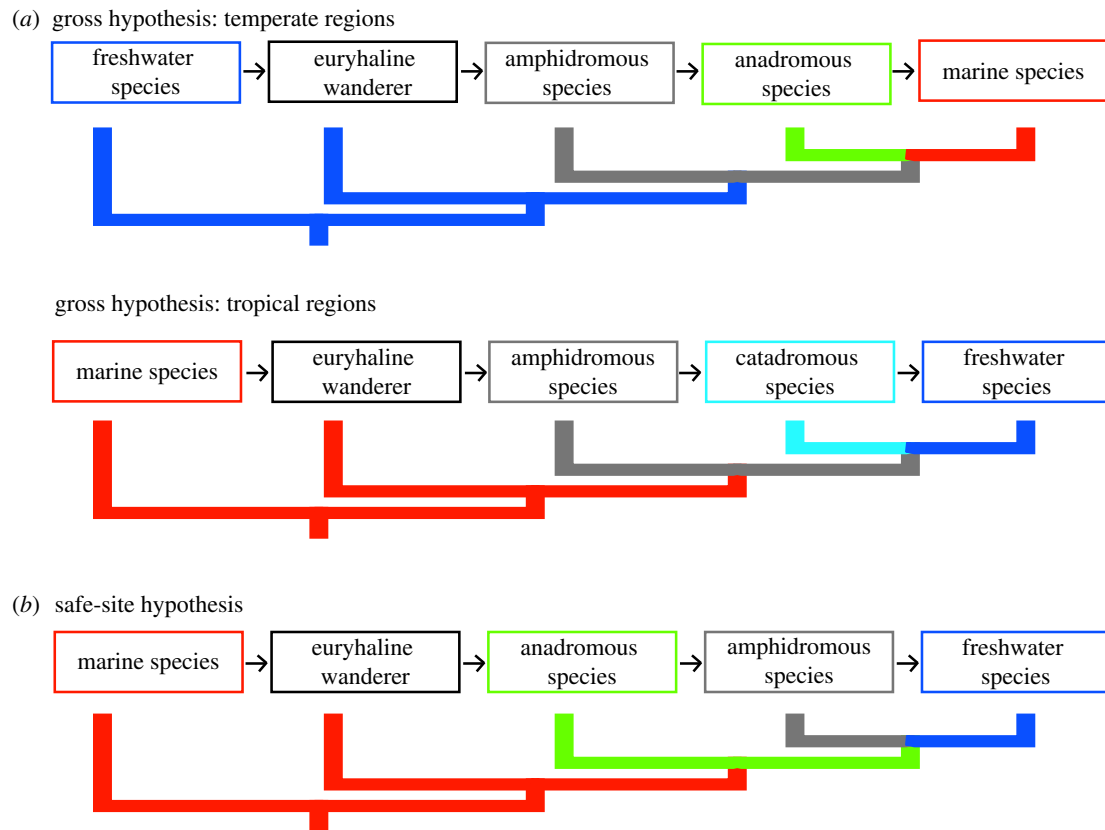


Figure 2. Hypotheses and phylogenetic predictions for the origins of diadromy based on (a) the productivity hypothesis [23] and (b) the safe-site hypothesis [25].

Molecular laboratory protocols and primer information for newly generated sequences have previously been published [29,33]. Whenever possible, two or more specimens per species were sequenced for each gene and preliminary analyses were conducted as a measure of quality control. Duplicate species representatives were removed for all subsequent analyses. Sequences were edited using the computer software GENEIOUS v. 5.4 [36] and aligned using the MUSCLE plugin [37] implemented in GENEIOUS. For alignment of the 16S data, we also used the CLUSTAL X [38] plugin in GENEIOUS to employ a range of gap opening and extension parameters to test the robustness of the MUSCLE alignment. Protein-coding genes were translated to amino acids to confirm open reading frames. Following alignment, we concatenated all four genes into a single matrix consisting of 5211 bp. The final matrix includes data for more than 70% of all possible cells, and comprises data from 152 species for 16S (1352 bp), 155 species for cytb (1131 bp), 98 species for rag1 (1491 bp) and 102 species for rag2 (1237 bp).

(b) Data partitioning and model selection

We used the program PARTITIONFINDER [39] to objectively determine the best-fit model of evolution and partitioning scheme simultaneously. Best-fit models were selected using Bayesian information criteria, selecting among the best models available under a 'greedy' search scheme using 'models=mrbayes' (see electronic supplementary material, table S2).

(c) Phylogeny and time-calibration

We conducted phylogenetic inference using maximum-likelihood (ML) and Bayesian methods. Our ML phylogenetic reconstructions were conducted using the program RAxML v. 7.3 [40]. For ML estimates, we used the best partitioning strategy chosen by PARTITIONFINDER and a GTRGAMMA model for each partition (electronic supplementary material, table S2). We

estimated support for nodes using the rapid-bootstrapping algorithm for 1000 non-parametric bootstrap replicates. We performed three separate ML searches to ensure that we searched tree space thoroughly and were not trapped on local optima.

We jointly estimated phylogeny and diversification times using a Bayesian relaxed clock method [41] in the program BEAST v. 1.7.2 [42]. We used an uncorrelated lognormal tree prior and a birth–death prior for rates of cladogenesis. Several initial BEAST runs showed that the partitioning strategy chosen by PARTITIONFINDER resulted in over-parametrization, so the dataset was partitioned by gene with partitions unlinked and a GTR model with gamma-distributed rate heterogeneity used for each partition. We ran four independent analyses for 300 million generations, sampling every 1000th generation. We used TRACER v. 1.5 [43] to evaluate convergence of runs and to verify that effective sample sizes were more than 200 for all parameters. We determined that the first 50 million generations from the MCMC sample were a conservative burn-in. We combined runs using LOGCOMBINER v. 1.6.1 [43] and the maximum credibility tree was generated in TREEANNOTATOR v. 1.6.1 [43].

To determine absolute divergence times, we used eight fossil and biogeographic age calibrations (see electronic supplementary material, text S3) with exponential priors to set a hard minimum and soft maximum bound [44]. Several of the fossil calibrations have been used in recent studies [34,45,46]; however, we included additional clupeiform fossils that have not yet been incorporated in diversification time analysis of this group.

(d) Ancestral character reconstruction

We used ancestral character reconstruction to determine the evolutionary history of diadromous, marine and freshwater lineages. Each species was coded for a discrete, unordered character (biome requirement) with four states: marine (0), freshwater (1), anadromous (3) or catadromous (4). Some species are thought to be

facultatively diadromous, where not all individuals migrate (e.g. alewife) [28]. We coded facultative diadromous species as having the respective diadromous state (anadromous or catadromous).

We used the program MESQUITE v. 2.73 [47] to conduct a maximum-parsimony (MP) and ML character reconstructions. For ML reconstructions, we used the Mk model [48]. By conducting these reconstructions on our time-calibrated phylogeny, we are able to determine the number, order and timing of transitions between marine, freshwater and diadromous life histories in clupeiforms.

3. Results

(a) Phylogeny

We recovered a well-resolved molecular phylogeny that is largely consistent with previous studies (figure 3; see also electronic supplementary material, figures S4 and S5). Our phylogenetic hypothesis includes several clupeiform lineages that have not previously been included in a molecular study. These results are presented and discussed in detail in electronic supplementary material, text S3.

(b) Ancestral character reconstructions: evolution of diadromy

Our ancestral character reconstructions indicate that catadromy evolved twice and anadromy evolved five times in Clupeiformes (figure 3). Amphidromy may have evolved once (see Discussion). In general, diadromous clupeiform lineages are monotypic and often placed in their own genus (*Alosa* is a notable exception).

The catadromous herring species *Potamalosa richmondia* was derived from a marine ancestor and occurs in the temperate regions of southeastern Australia. *Ethmalosa fimbriata* is a tropical catadromous herring species from the eastern Atlantic and western African rivers. This species was derived from a marine ancestor and is sister to a clade of freshwater herring from Africa.

The earliest instance of anadromy is *Clupeonella cultriventris*, which is a temperate anadromous lineage derived from a marine ancestor, although this is a tentative assessment because the phylogenetic placement of this species is not well supported. Our analyses indicate that seven anadromous species in the genus *Alosa* from temperate eastern North America and Eurasia were derived from a marine ancestor. Nested within the anadromous *Alosa* clade is a purely freshwater species (*Alosa chrysochloris*). Of the five anadromous lineages, there were three separate instances of an anadromous lineage evolving from a freshwater ancestor (*Tenualosa ilisha*, *Anchoviella lepidentostole* and *Lycengraulis grossidens*), all of which occurred in tropical regions.

(c) Ancestral character reconstructions: marine/freshwater transitions

Our analyses show that Clupeiformes is an ancestrally marine group that invaded continental freshwaters 12 times (excluding diadromous lineages; figure 3). There were only three reversals (freshwater to marine), all of which occurred in New World anchovy lineages distributed along the northeastern coast of South America. Lineages rarely invaded freshwaters in the same geographical area more than once.

Freshwater lineages are generally much more diverse than diadromous lineages. In fact, *Alosa* is the only diadromous lineage that is not monotypic (see above). Freshwater clupeiform lineages are particularly diverse in South America (mostly anchovies), southeastern Asia and western Africa.

4. Discussion

(a) Evolution of catadromy: testing the productivity hypothesis

As a scenario for the origin of catadromy, Gross's productivity hypothesis predicts that in the tropics, marine (euryhaline) ancestors would undergo excursions to freshwaters to feed in these high-productivity environments (figures 1 and 2). The fitness gain from these freshwater excursions would lead to annual migration to freshwaters for an extended period of growth, yielding catadromous lineages. Over time, migration back to the natal marine habitat could cease, severing the link to the marine environment, and yielding an endemic, entirely freshwater lineage [22,23].

Our results show that of the two origins of catadromy we inferred one is consistent with the productivity hypothesis, while the other is not. The catadromous African bonga shad, *E. fimbriata*, was derived from a marine ancestor, a pattern consistent with Gross's model. Furthermore, *E. fimbriata* is sister to a clade of freshwater herring (Pellonulini) that has diversified in African rivers and lakes [34]. The pattern of a freshwater clade closely related to a tropical catadromous lineage is also consistent with Gross's model. However, the close affinity of *Ethmalosa* and Pellonulini needs to be further investigated because our results did not provide strong statistical support for this relationship (see the electronic supplementary material, text S3).

The second catadromous lineage shows a pattern that is inconsistent with the Gross hypothesis. The Australian catadromous herring *P. richmondia* was derived from a marine ancestor and is sister to *Hyperlophus*, a marine lineage that occurs along the southern and eastern coasts of Australia. However, *P. richmondia* occurs in temperate rather than tropical regions. Furthermore, *P. richmondia* does not have close phylogenetic affinity to freshwater lineages, despite having more than 30 million years to produce a freshwater descendant (figure 3; electronic supplementary material, figure S5). The only non-diadromous freshwater clupeid in Australia is *Nematalosa erebi*, which is phylogenetically distant from *P. richmondia*, and is related to a different set of marine species (figure 3).

Although the phylogenetics of other non-clupeiform catadromous lineages has not been studied in much detail, the pattern of marine ancestry for catadromous fishes may be fairly general [1]. Anguillid eels are the best-known and most species-rich catadromous group. These widespread fishes were probably derived from a deep-sea ancestor, and while they may have originated in the tropics [49], many catadromous eels migrate to feed and grow in temperate freshwaters, not tropical freshwaters. These migrations to temperate freshwater habitats contradict Gross's predictions because temperate freshwaters have relatively low productivity. Furthermore, catadromous eels have never yielded fully freshwater lineages, nor even produced landlocked forms [6], even though as a group they have a broad

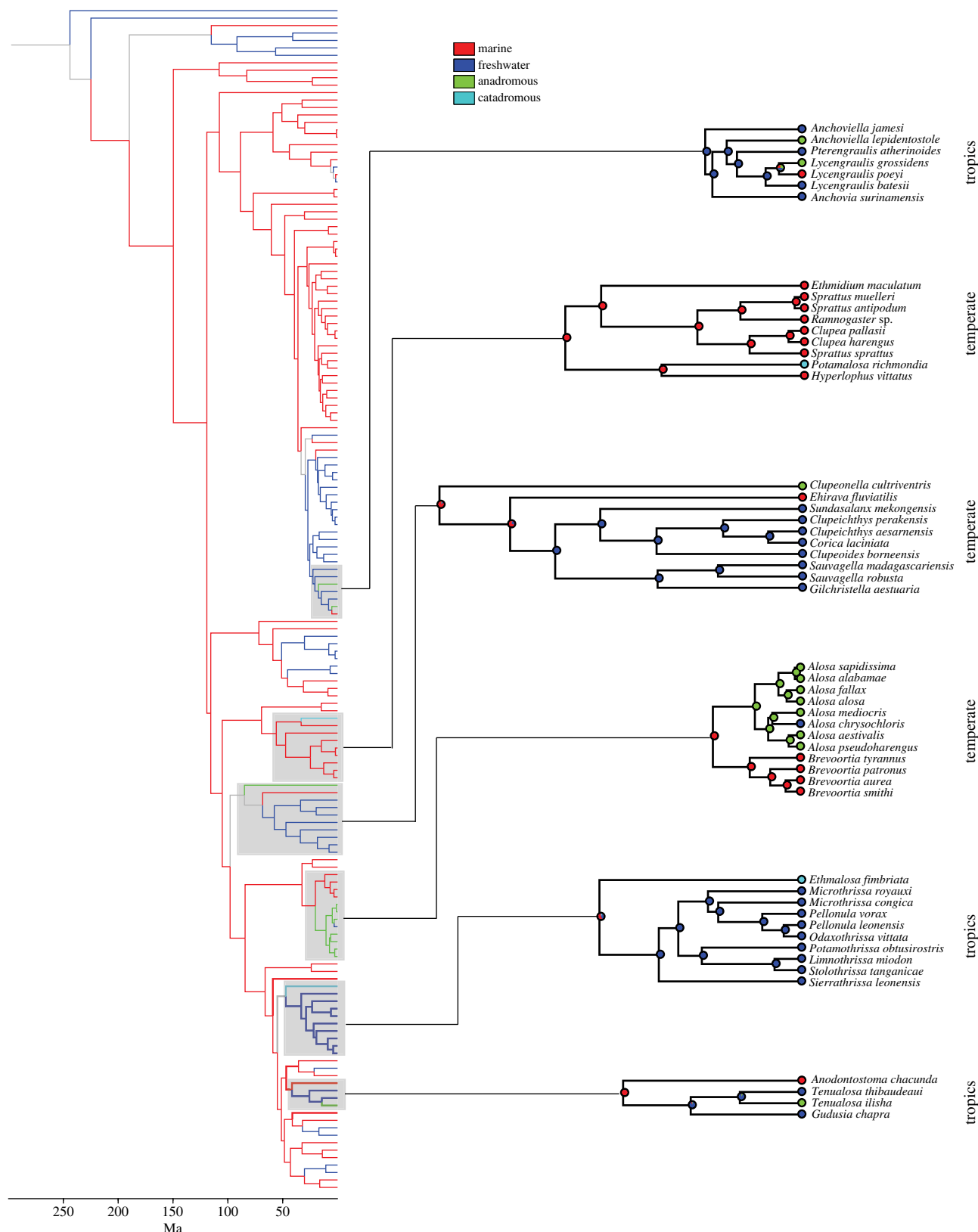


Figure 3. Time-calibrated phylogeny of Clupeiformes showing ancestral character reconstructions of marine (red), freshwater (dark blue), anadromous (green) and catadromous (light blue) lineages. Branch colours indicate character states from maximum-likelihood reconstructions, with branch states considered unambiguous when the log-likelihood was 2.0 units higher than the alternative state.

distribution, suggesting ample opportunity for landlocking. More recently, Feutry *et al.* [26] found that catadromous species in the tropical fish genus *Kuhlia* were derived from a marine ancestor, and that a catadromous lineage also gave rise to a marine lineage, a pattern that is also inconsistent with the productivity hypothesis.

(b) Evolution of anadromy: testing the productivity hypothesis

The productivity hypothesis posits a mirror opposite pattern for the origins of anadromous fishes (figures 1 and 2). In this scenario, a freshwater ancestor in temperate regions would start by

making excursions into more productive temperate marine habitats for feeding and growth. Initially, this would involve a euryhaline wanderer, which eventually would give rise to an anadromous lineage. Over time, the annual migrations from freshwater to marine habitats would cease, resulting in an entirely marine descendant. We find no evidence in clupeiform lineages to support Gross's predictions for the origins of anadromy (figure 3). Three of the five anadromous lineages—*T. ilisha*, *L. grossidens* and *An. lepidentostole*—were each independently derived from a freshwater ancestor. However, these lineages all occur in tropical rather than temperate regions. The well-known anadromous *Alosa* spp. and the lesser-known *Clupeonella* occur in temperate regions, but these taxa were independently derived from marine ancestors. Thus, none of the anadromous clupeiform lineages fit the Gross model.

Other anadromous fish groups also fail to show evidence for the Gross hypothesis [1]. Some anadromous groups such as sticklebacks [50] and smelts [25] occur in temperate areas, but are derived from marine ancestors. Anadromous ariid catfishes [51,52] are derived from marine ancestors and occur in tropical regions. None of these lineages fit Gross's model. Salmonids have a complicated history, but anadromous lineages probably evolved from freshwater ancestors and occur in temperate regions [25,53]; thus, Salmonidae may be the only group that is consistent with Gross's model.

It is not immediately evident why phylogenetic analyses of diadromy paint a different picture for the evolution of anadromy and catadromy than the species count approach of Gross (figure 1). However, it is clear that any future tests for latitudinal gradients of both catadromy and anadromy should explicitly incorporate phylogenetic approaches that consider lineage evolution, rather than using phylogenetically uncorrected species counts. Current phylogenetic evidence indicates that other factors (see below) might be as important as productivity for the origins of diadromy.

(c) Evolution of diadromy: the roles of predation, competition and abiotic factors

The evolution of diadromy is probably affected by species interactions. Dodson *et al.*'s safe-site hypothesis proposes a marine ancestor migrating to freshwater to reproduce in habitats that have lower predation pressure (figure 2) [25]. Over time, such populations would stop returning to the sea, leaving entirely freshwater descendants [25]. *Alosa* shows a pattern that fits the safe-site hypothesis; an anadromous clade was derived from a marine ancestor and gave rise to a fully freshwater lineage (*Al. chrysochloris*). *Clupeonella cultriventris* was also derived from a marine ancestor, but is sister to a clade that includes both marine and freshwater members. This pattern does not fit the safe-site hypothesis because once a lineage has successfully established itself in freshwater, there is no predicted advantage to returning to the marine environment. The remaining anadromous lineages (*T. ilisha*, *An. lepidentostole* and *L. grossidens*) were derived from freshwater ancestors and thus do not support the safe-site hypothesis. Dodson *et al.* [25] found that phylogenetic analyses of smelts (Osmeroidei) supported the safe-site hypothesis, but that analyses of salmonids did not. More work is needed to determine whether clades with phylogenetic patterns consistent with the safe-site hypothesis show evidence for reduction in predation in freshwater habitats compared with marine habitats.

Competition is an important factor affecting macroevolutionary transitions between marine and freshwater lineages [29,52,54], and is also likely to play a role in determining which geographical regions diadromous species are able to invade [55]. This hypothesis is based on the concept that competition is strongest among closely related taxa [56–58]. In clupeiforms, we find that diadromy generally has not evolved multiple times in the same geographical area (figure 3), suggesting that once a diadromous lineage invades a region, it may prevent ecologically similar species from evolving the same migratory behaviour. Furthermore, diadromous species often occur in regions with low species diversity, which McDowall [55] argued was in part due to reduced competition from incumbent species. We suggest there is growing phylogenetic evidence that competition does play a role in the origins of diadromy.

One of the primary determinants of reduced competition in certain geographical areas is the palaeogeographical history of those areas. For example, northern latitudes have been subjected to repeated bouts of glacial advances and retreats, the most recent occurring only 10 000 years ago. These areas often have a high proportion of diadromous lineages (along with lineages of recent marine ancestry) [1,55]. Oceanic islands also have a high proportion of diadromous lineages in freshwater habitats [18,19]. McDowall [1,55] suggested that the high dispersal ability of diadromous lineages facilitates re-colonization of newly available, reduced competition habitats. While it is less clear what palaeogeographic events might favour the evolution of diadromy in continental rivers at lower latitudes, it is possible that marine incursions have played a role in reducing competition in some areas, thereby facilitating transitions between habitats [59,60]. Thus, the palaeogeography and geological history of certain areas may have played an important role in determining the evolutionary patterns of diadromy.

(d) Is diadromy a pathway for marine/freshwater evolutionary transitions?

An expected outcome in both the productivity and safe-site hypotheses is that diadromy is a precursor to permanent transitions between marine and freshwater biomes in fish lineages (although see [20,21,61,62]). This concept is intuitively appealing: a species that migrates between marine and freshwater environments could become isolated in one habitat and successfully establish a permanent population. Over time, this could result in speciation and subsequent diversification in the new habitat. The expected phylogenetic patterns from this process, assuming extinction has not erased ancestral species, are illustrated in figure 2. Clupeiformes was a likely candidate group for fulfilling these scenarios because the group includes many diadromous, marine and freshwater species. However, we find that diadromy has played a minimal role in transitions between marine and freshwater biomes (figure 3). Diadromy is only rarely an intermediate condition between freshwater and marine lineages. Furthermore, only one of the 12 marine-to-freshwater transitions we determined were associated with any diadromous species. To date, we lack an empirical example of a freshwater lineage evolving via catadromous ancestry (the *Ethmalosa*/Pellonulini clade is a possible exception), or an exclusively marine lineage evolving from an

anadromous ancestor [6], which are the expected end points of the productivity and safe-site hypotheses [22].

The decoupled relationship between diadromy and biome transitions is a pattern that is repeated in other lineages [51,52]. There are instances of landlocked freshwater populations of anadromous marine lineages such as shads, salmon and sticklebacks, which in some cases have undergone morphological divergence [11,63]. Interestingly, these cases are all very recent (Pleistocene or younger), and generally neither diverse nor spread across large geographical areas, suggesting that there are constraints on diversification of freshwater populations derived from diadromous ancestors. It seems that diadromy is not a pathway for large-scale transitions between marine and freshwater habitats. It may instead be a macroevolutionary dead end, since most diadromous lineages are species-poor compared with their strictly marine or freshwater relatives.

References

- McDowall RM. 1988 *Diadromy in fishes: migrations between freshwater and marine environments*. London, UK: Croom Helm.
- Talbot GB, Sykers JE. 1958 Atlantic coast migrations of American shad. *Fish. Bull. US Fish Wildl. Serv.* **58**, 473–490.
- Roule L. 1933 *Fishes: their journeys and migrations*, p. 270. London, UK: Rouledge.
- Myers GS. 1949 Salt-tolerance of fresh-water fish groups in relation to zoogeographical problems. *Bijdragen tot de Dierkunde* **28**, 315–364.
- McDowall RM. 1999 Diadromy and genetic diversity in Nearctic and Palearctic fishes. *Mol. Ecol.* **8**, 527–528. (doi:10.1046/j.1365-294x.1999.00560.x)
- McDowall RM. 2001 Diadromy, diversity and divergence: implications for speciation processes in fishes. *Fish Fish.* **2**, 278–285. (doi:10.1046/j.1467-2960.2001.00050.x)
- McDowall RM. 2008 Diadromy, history and ecology: a question of scale. *Hydrobiologia* **602**, 5–14. (doi:10.1007/s10750-008-9290-7)
- Waters JM, Wallis GP. 2001 Cladogenesis and loss of the marine life-history phase in freshwater galaxiid fishes (Osmeriformes: Galaxiidae). *Evolution* **55**, 587–597. (doi:10.1554/0014-3820(2001)055[0587:calotm]2.0.co;2)
- Hasselman DJ, Ricard D, Bentzen P. 2013 Genetic diversity and differentiation in a wide ranging anadromous fish, American shad (*Alosa sapidissima*), is correlated with latitude. *Mol. Ecol.* **22**, 1558–1573. (doi:10.1111/mec.12197)
- Closs GP, Hicks AS, Jellyman PG. 2013 Life histories of closely related amphidromous and non-migratory fish species: a trade-off between egg size and fecundity. *Freshwater Biol.* **58**, 1162–1177. (doi:10.1111/fwb.12116)
- Palkovacs EP, Dion KB, Post DM, Caccone A. 2008 Independent evolutionary origins of landlocked alewife populations and rapid parallel evolution of phenotypic traits. *Mol. Ecol.* **17**, 582–597. (doi:10.1111/j.1365-294X.2007.03593.x)
- Schindler DE, Armstrong JB, Bentley KT, Jankowski K, Lisi PJ, Payne LX. 2013 Riding the crimson tide: mobile terrestrial consumers track phenological variation in spawning of an anadromous fish. *Biol. Lett.* **9**, 20130048. (doi:10.1098/rsbl.2013.0048)
- Nelson JS. 2006 *Fishes of the World*, 4th edn, p. 601. New York, NY: John Wiley & Sons.
- McDowall RM. 2009 Making the best of two worlds: diadromy in the evolution, ecology, and conservation of aquatic organisms. *Am. Fish Soc. Symp.* **69**, 1–22.
- McDowall RM. 1992 Diadromy: origins and definitions of terminology. *Copeia* **1992**, 248–251. (doi:10.2307/1446563)
- McDowall RM. 2007 On amphidromy, a distinct form of diadromy in aquatic organisms. *Fish Fish.* **8**, 1–13. (doi:10.1111/j.1467-2979.2007.00232.x)
- Myers GS. 1949 usage of anadromous, catadromous and allied terms for migratory fishes. *Copeia* **1949**, 89–97. (doi:10.2307/1438482)
- McDowall RM. 1987 The occurrence and distribution of diadromy among fishes. In *Common strategies of anadromous and catadromous fishes* (eds M Dadswell, R Klauda, C Moffitt, R Saunders), pp. 1–13. Bethesda, MD: American Fisheries Society, Symposium 1.
- McDowall RM. 1998 Driven by diadromy: its role in the historical and ecological biogeography of the New Zealand freshwater fish fauna. *Ital. J. Zool.* **65**(Suppl. 1), 73–85. (doi:10.1080/11250009809386799)
- McDowall RM. 1997 The evolution of diadromy in fishes (revisited) and its place in phylogenetic analysis. *Rev. Fish. Biol. Fish.* **7**, 443–462. (doi:10.1023/A:1018404331601)
- Parenti LR. 2008 Life history patterns and biogeography: an interpretation of diadromy in fishes. *Ann. Missouri Botanical Garden* **95**, 232–247. (doi:10.3417/2006051)
- Gross M. 1987 Evolution of diadromy in fishes. In *Common strategies of anadromous and catadromous fishes* (eds M Dadswell, R Klauda, C Moffitt, R Saunders), pp. 14–24. Bethesda, MD: American Fisheries Society, Symposium 1.
- Gross MR, Coleman RM, McDowall RM. 1988 Aquatic productivity and the evolution of diadromous fish migration. *Science* **239**, 1291–1293. (doi:10.1126/science.239.4845.1291)
- Bunt JS. 1975 Primary productivity of marine ecosystems. In *Primary productivity of the biosphere* (eds H Leith, RH Whittaker), pp. 169–183. New York, NY: Springer.
- Dodson JJ, Laroche J, Lecomte F. 2009 Contrasting evolutionary pathways of anadromy in euteleostean fishes. *Am. Fish Soc. Symp.* **69**, 63–77.
- Feutry P, Castelin M, Ovenden JR, Dettai A, Robinet T, Cruaud C, Keith P. 2013 Evolution of diadromy in fish: insights from a tropical genus (*Kuhlia* species). *The American Naturalist* **181**, 52–63. (doi:10.1086/668593)
- Berra T. 2001 *Freshwater fish distribution*, p. 604. New York, NY: Academic Press.
- McDowall RM. 2003 Shads and diadromy: implications for ecology, evolution, and biogeography. *Am. Fish Soc. Symp.* **35**, 11–23.
- Bloom DD, Lovejoy NR. 2012 Molecular phylogenetics reveals a pattern of biome conservatism in New World anchovies (Family Engraulidae). *J. Evol. Biol.* **25**, 701–715. (doi:10.1111/j.1420-9101.2012.02464.x)
- Lavoué S, Miya M, Kawaguchi A, Yoshino T, Nishida M. 2008 The phylogenetic position of an undescribed paedomorphic clupeiform taxon: mitogenomic evidence. *Ichthyol. Res.* **55**, 328–334. (doi:10.1007/s10228-008-0044-3)
- Lavoué S, Miya M, Nishida M. 2010 Mitochondrial phylogenomics of anchovies (family Engraulidae) and recurrent origins of pronounced miniaturization in the order Clupeiformes. *Mol. Phylogenet. Evol.* **56**, 480–485. (doi:10.1016/j.ympev.2009.11.022)
- Lavoué S, Miya M, Saitoh K, Ishiguro NB, Nishida M. 2007 Phylogenetic relationships among anchovies, sardines, herrings and their relatives (Clupeiformes), inferred from whole mitogenome sequences. *Mol.*

- Phylogenet. Evol.* **43**, 1096–1105. (doi:10.1016/j.ympev.2006.09.018)
33. Li CH, Orti G. 2007 Molecular phylogeny of clupeiformes (Actinopterygii) inferred from nuclear and mitochondrial DNA sequences. *Mol. Phylogenet. Evol.* **44**, 386–398. (doi:10.1016/j.ympev.2006.10.030)
 34. Wilson AB, Teugels GG, Meyer A. 2008 Marine incursion: the freshwater herring of Lake Tanganyika are the product of a marine invasion into west Africa. *PLoS ONE* **3**, e1979. (doi:10.1371/journal.pone.0001979)
 35. Lavoué S, Miya M, Musikasinthorn P, Chen W-J, Nishida M. 2013 Mitogenomic evidence for an Indo-west Pacific origin of the clupeoidei (Teleostei: Clupeiformes). *PLoS ONE* **8**, e56485. (doi:10.1371/journal.pone.0056485)
 36. Drummond A *et al.* 2010 Geneious. (v5.3 ed). See <http://www.geneious.com>.
 37. Edgar RC. 2004 MUSCLE: multiple sequence alignment with high accuracy and high throughput. *Nucleic Acids Res.* **32**, 1792–1797. (doi:10.1093/nar/gkh340)
 38. Thompson JD, Gibson TJ, Plewniak F, Jeanmougin F, Higgins DG. 1997 The CLUSTAL X windows interface: flexible strategies for multiple sequence alignment aided by quality analysis tools. *Nucleic Acids Res.* **25**, 4876–4882. (doi:10.1093/nar/25.24.4876)
 39. Lanfear R, Calcott B, Ho SYW, Guindon S. 2012 PartitionFinder: combined selection of partitioning schemes and substitution models for phylogenetic analyses. *Mol. Biol. Evol.* **29**, 1695–1701. (doi:10.1093/molbev/mss020)
 40. Stamatakis A. 2006 RAxML-VI-HPC: maximum likelihood-based phylogenetic analyses with thousands of taxa and mixed models. *Bioinformatics* **22**, 2688–2690. (doi:10.1093/bioinformatics/btl446)
 41. Drummond AJ, Ho SYW, Phillips MJ, Rambaut A. 2006 Relaxed phylogenetics and dating with confidence. *PLoS Biol.* **4**, e88. (doi:10.1371/journal.pbio.0040088)
 42. Drummond AJ, Suchard MA, Xie D, Rambaut A. 2012 Bayesian phylogenetics with BEAUti and the BEAST 1.7. *Mol. Biol. Evol.* **29**, 1969–1973. (doi:10.1093/molbev/mss075)
 43. Drummond AJ, Rambaut A. 2007 BEAST: Bayesian evolutionary analysis by sampling trees. *BMC Evol. Biol.* **7**, 214. (doi:10.1186/1471-2148-7-214)
 44. Ho SYW, Phillips MJ. 2009 Accounting for calibration uncertainty in phylogenetic estimation of evolutionary divergence times. *Syst. Biol.* **58**, 367–380. (doi:10.1093/sysbio/syp035)
 45. Alfaro ME, Santini F, Brock C, Alamillo H, Dornburg A, Rabosky DL, Carnevale G, Harmon LJ. 2009 Nine exceptional radiations plus high turnover explain species diversity in jawed vertebrates. *Proc. Natl Acad. Sci. USA* **106**, 13 410–13 414. (doi:10.1073/pnas.0811087106)
 46. Santini F, Harmon LJ, Carnevale G, Alfaro ME. 2009 Did genome duplication drive the origin of teleosts? A comparative study of diversification in ray-finned fishes. *BMC Evol. Biol.* **9**, 194. (doi:10.1186/1471-2148-9-194)
 47. Maddison WP, Maddison DR. 2011 Mesquite: a modular system for evolutionary analysis. (2.75 ed.).
 48. Pagel M. 1999 The maximum likelihood approach to reconstructing ancestral character states of discrete characters on phylogenies. *Syst. Biol.* **48**, 612–622. (doi:10.1080/106351599260184)
 49. Inoue JG *et al.* 2010 Deep-ocean origin of the freshwater eels. *Biol. Lett.* **6**, 363–366. (doi:10.1098/rsbl.2009.0989)
 50. Kawahara R, Miya M, Mabuchi K, Near TJ, Nishida M. 2009 Stickleback phylogenies resolved: evidence from mitochondrial genomes and 11 nuclear genes. *Mol. Phylogenet. Evol.* **50**, 401–404. (doi:10.1016/j.ympev.2008.10.014)
 51. Betancur-R R. 2010 Molecular phylogenetics supports multiple evolutionary transitions from marine to freshwater habitats in ariid catfishes. *Mol. Phylogenet. Evol.* **55**, 249–258. (doi:10.1016/j.ympev.2009.12.018)
 52. Betancur-R R, Ortí G, Stein AM, Marceniuk AP, Alexander Pyron R. 2012 Apparent signal of competition limiting diversification after ecological transitions from marine to freshwater habitats. *Ecol. Lett.* **15**, 822–830. (doi:10.1111/j.1461-0248.2012.01802.x)
 53. McLennan DA. 1994 A phylogenetic approach to the evolution of fish behavior. *Rev. Fish Biol. Fish.* **4**, 430–460. (doi:10.1007/BF00042889)
 54. Bloom DD, Weir JT, Piller KR, Lovejoy NR. 2013 Do freshwater fishes diversify faster than marine fishes? A test using state-dependent diversification analyses and molecular phylogenetics of New World Silversides (Atherinopsidae). *Evolution* **67**, 2040–2057. (doi:10.1111/evo.12074)
 55. McDowall RM. 2008 Why are so many boreal freshwater fishes anadromous? Confronting 'conventional wisdom'. *Fish Fish.* **9**, 208–213. (doi:10.1111/j.1467-2979.2008.00271.x)
 56. Violle C, Nemergut DR, Pu Z, Jiang L. 2011 Phylogenetic limiting similarity and competitive exclusion. *Ecol. Lett.* **14**, 782–787. (doi:10.1111/j.1461-0248.2011.01644.x)
 57. Wiens JJ *et al.* 2010 Niche conservatism as an emerging principle in ecology and conservation biology. *Ecol. Lett.* **13**, 1310–1324. (doi:10.1111/j.1461-0248.2010.01515.x)
 58. Wiens JJ, Brandley MC, Reeder TW. 2006 Why does a trait evolve multiple times within a clade? Repeated evolution of snakelike body form in squamate reptiles. *Evolution* **60**, 123–141.
 59. Bloom DD, Lovejoy NR. 2011 The biogeography of marine incursions in South America. In *Historical biogeography of neotropical freshwater fishes* (eds JS Albert, RE Reis), pp. 137–144. Berkeley, CA: University of California Press.
 60. Lovejoy NR, Albert JS, Crampton WGR. 2006 Miocene marine incursions and marine/freshwater transitions: evidence from Neotropical fishes. *J. South Am. Earth Sci.* **21**, 5–13. (doi:10.1016/j.jsames.2005.07.009)
 61. McDowall RM. 1993 A recent marine ancestry for diadromous fishes—sometimes yes, but mostly no. *Environ. Biol. Fishes* **37**, 329–335. (doi:10.1007/bf00005199)
 62. McDowall RM. 2002 The origin of the salmonid fishes: marine, freshwater ... or neither? *Rev. Fish Biol. Fish.* **11**, 171–179. (doi:10.1023/A:1020370328194)
 63. McKinnon JS, Rundle HD. 2002 Speciation in nature: the threespine stickleback model systems. *Trends Ecol. Evol.* **17**, 480–488. (doi:10.1016/s0169-5347(02)02579-x)